



EDUCATION
CHARTER SCHOOL
SERVING CANTON
 Open this semester — See page, A2

CULTURE
MISSISSIPPI SYMPHONY
ORCHESTRA PREPS
 New season — See page, A3



Madison County's
leading newspaper.

MADISON COUNTY JOURNAL

Serving Madison, Ridgeland,
Canton, Flora, Gluckstadt.

VOLUME 42 NUMBER 34 Copyright © 2023 Madison County Journal MADISON COUNTY, MISSISSIPPI www.madisoncountyjournal.com AUGUST 24, 2023 ** \$1.00

BOZEMAN REZONING

Madison mayor sues county supervisors

By **MICHAEL SIMMONS**
 msimmons@onlinemadison.com

Madison Mayor Mary Hawkins Butler filed a lawsuit in circuit court on Monday against three members of the Madison County Board of Supervisors involving the rezoning of 350 acres on

Bozeman road that is currently under appeal.

Hawkins-Butler filed the suit personally and in her official capacity, naming District 3 Supervisor Gerald Steen, District 4 Supervisor Karl Banks, District 5 Supervisor Paul Griffin, and the bonding company in an effort

to have them repay the county \$965,000 she alleges was illegally paid to the Bozeman Family Trust for property the county already owned.

The lawsuit also alleges the county was involved in a pay-to-play scheme that involved the transfer of land to the county in exchange for

rezoning of the 350 acres from a Special-Use District (SU-1) to a Highway Commercial District (C-2) that will allow everything from convenience stores to strip malls.

At a February 2023 meeting of the Madison County Planning & Zoning Commis-

sion, Board Attorney Mike Espy explained that the county acquired 35 acres from the Minnie J. Bozeman Family Limited Partnership in 2022, half in the form of a donation and the other half for \$1,030,700, which would be returned upon successful completion of the Reunion

interchange with ramps leading to I-55.

"He didn't want to donate all of it, because he's been fooled in the past by the county, where he donated land that was never any ramps, never any bridge, so

See **LAWSUIT**, page A3

CRIME

Deputies involved in shooting of a suspect

By **DUNCAN DENT**
 duncan@onlinemadison.com

CANTON — A man who went on a shooting rampage here that killed one person and injured others was fatally shot by Madison County Sheriff's deputies Tuesday night as they attempted to apprehend him.

The Mississippi Bureau of Investigation is investigating the officer-involved shooting.

Department of Public Safety spokesman Bailey Martin said the deceased suspect shot by officers is 24-year-old Ladarius Johnson. The person he allegedly fatally shot has been identified by Madison County Coroner Alex Breelandas Tiara Scott, 34.

"MBI is currently assessing this critical incident and gathering evidence," Martin said. "Upon completing the investigation, agents will share their findings with the Attorney General's Office."

Madison County Sheriff's deputies responded to a domestic disturbance call reporting shots fired on Buttonwood Lane in the Oakfield subdivision at 9:45 p.m. on Tuesday, Aug. 22.

When deputies arrived they

See **CRIME**, page A3

STATE TEST

Schools land in top 10 for math, English

By **STAFF REPORTS**
 news@onlinemadison.com

Madison County Schools recently scored in the top 10 districts throughout the state on the 2023 Mississippi Academic Assessment Program in math and English language arts.

"Our district exemplifies the Mark of Excellence in so many ways, and the results of the 2023 MAAP testing affirm that our students and teachers are moving that mark to be their very best," said Superintendent Charlotte Seals. "We are so incredibly proud of the hard work of every member of our MCS community to achieve these remarkable results."

Madison County Schools is the largest district in the state amongst the top 10. The district currently has over 13,000 students across 23 different campuses from pre-K all the way to 12th grade.

The Mississippi Department of Education released the test scores last week.



Canon's Closet, named after a former Ridgeland K-9, houses items that the police department can give to children and pets in need.

ABANDONED CHILDREN, PETS

Ridgeland cuts ribbon on Canon's Closet

By **JOHN LEE**
 john@onlinemadison.com

The Ridgeland Police Department became the home of Canon's Closet on Wednesday morning to serve as a place to store items for abandoned children and pets.

The closet is named after a former K-9 officer, Canon, and also serves to honor Sgt. Ray Daniels, his handler, who passed away in July 2022.

RPD officers, Mayor Gene McGee, Ridgeland Chamber of Commerce members, and other city officials gathered in the PD's roll call room to cut the ribbon and make Canon's Closet official.

Linda Bynum, executive director of the Ridgeland Chamber of Commerce, said Ridgeland officers are often called to hotels, motels, apartments, abandoned houses, and cars to find children, often with their pets, alone and hungry.

"Our officers take these children to the Ridgeland Police Station and inform Child Protective Services," Bynum said. "Pets are placed with the American Animal Rescue League. While the children and pets wait at the station, our officers go to local stores and purchase necessities for them. They pay for these items with their own money. But because of the generosity of our great citizens of Ridgeland and surrounding areas, this will no longer be the case. Everything a child could need or want is inside the closet."

Items inside the closet include



The City of Ridgeland cut the ribbon for the Ridgeland Police Department's new Canon's Closet, located in the RPD roll call room. Pictured, from left: Allison Deweese from Holmes Community College, John Dorsa from State Farm, Lt. Eddy Addison (Patrol Commander), Lt. Brett Bertucci (CID Commander), Mayor Gene McGee, Sgt. Ryan Jungers, Chief Brian Myers, Officer Scott Young, Officer Stephen Webb, Assistant Chief

diapers, pull-ups, baby wipes non-perishable food and drink items, blankets, hygiene items, coloring books, crayons, toys, stuffed animals, books, clothing, as well as cat and dog food.

Mayor McGee spoke and said he is thankful to the Chamber and all the officers who put their lives on the line.

"There's been a lot of trying times with our officers and some of them have had to do things that aren't pleasant," McGee said. "Every single

one of them are professionals and they make Ridgeland proud. I'm proud of this closet and I'm proud of everyone supporting it. I know this will be something that will continue for years to come."

Police Chief Bryan Myers said the closet is something good coming from a very sad situation.

"This closet reminds me of a situation we had where there were three or four kids here at the station," Myers said. "We found them in a hotel room. They had nothing. They

were filthy, and the parents dropped the ball. Our officers spent their own money buying things like food and coloring books and we had these kids here for six or seven hours, and we were able to get them everything they needed."

To close out the ceremony, Father Albeenreddy Vatti at St. Francis of Assisi Catholic Church blessed the closet and prayed over all the officers in the department.

To learn more about Canon's Closet, call RPD at (601) 856-2121.



Canton charter school open for education

By **DUNCAN DENT**
duncan@onlinemadison.com

CANTON — Parents of students in the county's first charter school say they are pleased with the experience their families have had since SR1 College Preparatory and STEM Academy opened earlier this month. Kyporshia Johnson is the mother of Kailancee Johnson, a kindergartner at the school. "The school year is going very well," said Johnson of

Canton. "She loves it." SR1 CPSA opened its doors on Thursday, Aug. 3, at its current location at the St. Paul AME Zion Family and Life Center on 505 S. Union Street in Canton. Tamu Green, the Founder, and CEO of SR1, said the school currently has the capacity to accommodate 75 students per grade. "Our commitment to education is a foundational investment in cultivating Mississippi students who lead the

way in creativity," Green said. The academy will add one grade level each year until it reaches fifth grade. According to Green, this school is "the first-ever free public charter school dedicated to STEM" in the state. Green said the learning approach at SR1 CPSA emphasizes an iterative process of learning while addressing crucial social skills. Moreover, the school places a strong emphasis on

foundational literacy skills, creating a comprehensive curriculum that seamlessly integrates STEM subjects with reading and writing fundamentals. Leading SR1 CPSA is Provost Kristen Williams, who holds degrees from Alcorn State University and the University of Southern Mississippi. "I am thrilled to embark on this journey with all of you! Our pursuit of excellence remains unwavering, with our students at the heart of everything we do. Together, we will overcome challenges and nurture a love for learning. Let's remember that education is not merely about filling a container; it's about igniting a passion," Williams said. Johnson said she first heard of the school through a flyer at an area gas station. She said she thought the school was a perfect fit for her daughter after she continued to research the school online. "I thought it would give my baby a better school experience," Johnson said. Zanna Steward, of Jackson, is the mother of Na'Zhyia Steward, a first grader. Steward said her

daughter loves where she is. "She actually loves going to school," Steward said. Steward said teachers have engaged her daughter with a variety of hands-on projects and experiments including building a rocket and caterpillar enclosure where they study the life cycle of a caterpillar as it transforms into a butterfly. "It is amazing," Steward said. "She came home and was able to tell them about the whole life cycle of a caterpillar." Johnson said her daughter has been learning about microscopes, both using them and taking them apart, and said her daughter is also engaging in certain subjects, like vocabulary, at the first-grade level. According to Steward, the staff at the school has been "very attentive" to any questions she has had and said their bus service ensures her daughter gets home from Canton safely. She said they also post videos from class so parents have some insight into what their children are learning. "I really don't have the words to express how I feel about this school," Steward said.

The St. Paul AME Zion Family and Life Center is a temporary location for the school, officials say. The academy has secured a sprawling 110-acre learning space in Madison County with plans already in motion for a state-of-the-art campus that will feature both indoor and outdoor learning facilities in the coming years. SR1 CPSA will host the "SR1 CPSA C.O.O.L. (Community Oriented Opportunities for Learning) STEM Night" on Tuesday, Sept. 19, focusing on conservation in Mississippi, Williams said. This event will be a collaborative effort involving institutions such as the Mississippi Museum of Natural Science, Millsaps College, Mississippi State University, and other selected partners. The event will be open to the public. SR1 CPSA welcomes applications for K-1st grade students for the 2023-2024 year and K-2nd grade for the 2024-2025 school year from Canton and neighboring districts, Green said. For additional information about SR1 CPSA, please visit the official website at www.sr1cpsa.org or contact 601-206-4544.

If you've got it, we protect it.

We have you covered with a full spectrum of quality personal and business solutions.

SPECIALIZING IN AUTO, HOME, AND BUSINESS INSURANCE

Steele Dehmer
Dehmer Insurance

601-624-7833
steele@dehmerinsurance.com
www.dehmerinsurance.com

DEHMER INSURANCE AGENCY

About the Journal

Founded in 1982, the Madison County Journal is locally owned by Prince Media Group which has published newspapers since 1881.

The weekly Journal primarily serves Madison County, including the cities of Madison, Ridgeland, Canton and Flora.

SUBSCRIBE

- Go to mymcj.com
- Call (601) 853-4222
- Mail \$42 to P.O. Box 219, Ridgeland, MS 39158

MADISON COUNTY MAGAZINE

Six times a year residents west of I-55 receive a sample copy with the Magazine inside the Journal. Go to mymcj.com to subscribe.

(USPS 687-570)

The Madison County Journal is published every Thursday by the Madison County Publishing Co., Inc., 293 Commerce Park Drive, Ridgeland, MS 39157, James E. Prince III, president. Subscriptions are: \$42 per year in Madison and Hinds counties; \$46 in-state; \$52 out-of-state. Single copy price is \$1.00. Periodicals postage paid at Ridgeland, MS.

The Madison County Journal reserves the right to edit or reject any or all advertising.

POSTMASTER: Send address changes to: The Madison County Journal, P.O. Box 219, Ridgeland, MS 39158.

Meet the Candidates

The Madison County Journal is authorized to announce the following candidates:

Tax Collector
C.J. Garavelli (Republican)

District 25 State Senate
J. Walter Michel (Republican)

Paid Political

Sunnybrook Estates
A Christian Retirement Community

THERAPY

EMPOWERS OUR RESIDENTS TO THRIVE

Mid South Rehab Therapy is proud to announce a new partnership with Sunnybrook Estates!

COMPREHENSIVE THERAPY SERVICES

Offering outpatient physical, occupational, and speech therapy services

Our state-of-the-art equipment and highly trained therapists ensure an optimal experience and exceptional outcomes for our residents.

Our therapy program provides a multitude of benefits that helps restore overall function and quality of life. We can help individuals who are unable to perform normal daily activities and treat various medical conditions.

Treating conditions related to (but not limited to):

- Orthopedic Surgery
- Total Joint Replacement
- Swallowing Difficulties
- Chronic Pain
- Back Pain/ Neck Pain
- Stroke or CVA
- Neurological Problems
- Cognitive & Memory Problems
- Speech and Language

Restoring quality of life:

- Functional Mobility
- Gait
- Balance/Fall Prevention
- Self-Care/ADL's
- IADL's
- Community Reintegration

Sunnybrook Estates
200 Serenity Lane | Madison, MS 39110
(601) 882-0251 | sunnybrookestates.net

Therapy services provided by midsouthrehabservices.com

Mid South Rehab Services

Mississippi Symphony Orchestra announces season

The Mississippi Symphony Orchestra promises “A Season of Fresh Voices” to mark its 79th year. Beginning early September and providing the best in live classical and popular music, the season brims with new compositions and connections, as well as masterworks and beloved pops favorites.

A first-time collaboration with Jackson State University’s Phillis Wheatley Poetry Festival, this November, spotlights four of Margaret Walker’s greatest poems, including her famous “For My People.”

Her words come to brilliant musical life in songs by composer Randy Klein, special guest vocalist Aurelia Williams and the combined choirs of Tougaloo College and Mississippi College.

A new concerto for violin and orchestra by James Sclater of Clinton honors MSO concertmaster and lifelong friend Shellie Kemp in a premiere performance, in January. And, next March, MSO performs a major new piece celebrating Native American heritage — James Lee III’s Visions of Cahokia, inspired

by the pre-Columbian settlement at the center of Mississippian culture.

“Three brand new things, never been done here, that people will love,” MSO President and Executive Director Jenny Mann said of these series highlights.

More spotlight firsts include MSO Principal Bud Berthold in a timpani concerto in February and the award-winning Project Fusion Saxophone Quartet, in April. Several MSO musicians return to center stage as well, in a season that highlights their

remarkable talents. Plus, the exciting and explorative series at Cade Chapel will once again present the talents of 5th Child, Teneia Sanders, pianist Tyler Kemp, and much more.

Traditional favorites abound throughout the season, including an all-Tchaikovsky concert in October, and an expanded “Mozart & Friends by Candlelight” in January, plus major works by Copland, Gershwin, Beethoven, Debussy, and Shostakovich.

In October, rock band and

crowd favorite Jeans ‘n Classics returns to MSO’s Pops Series with their “Back to Back” show, covering the chart-topping numbers of Billy Joel and Elton John. Love songs bloom in February’s “Heart Beats” concert and “Pepsi Pops” caps the season with a fireworks finale next May.

Subscriptions are on sale

now at www.msorchestra.com for all of MSO’s vibrant concert series. Benefits include the best possible choice of seats, cost savings over the per-concert price, first notice of all MSO developments, and more opportunities to come.

Victim in fiery car crash unidentified

By **DUNCAN DENT**
duncan@onlinemadison.com

The victim of a fiery one-vehicle crash last Thursday morning on I-55 between Madison and Ridgeland remains unidentified, officials say.

Madison Police Capt. Kevin Newman said “Due to the condition of the driver’s remains as a result of the post-accident fire,” the official identification has not been made.

“We are waiting on the Coroner’s Office to provide

that information,” Newman said.

Madison County Coroner Alex Breeland said his office hoped to have the victim identified by the end of the week, though the process is still ongoing.

The crash happened on Aug. 17, at about 9 a.m. Newman said MPD received a 911 call regarding a gray passenger car traveling southbound in the northbound lanes of Interstate 55 in the Madison city limits.

A few minutes later, the Ridgeland Police Department

received a 911 call that a gray passenger car crashed into the trees on the west side of the southbound lanes near mile marker 107 at the Madison Avenue exit, Newman said.

“Once emergency personnel arrived on scene,” Newman said, “the vehicle was already fully engulfed in flames.”

The Madison Fire Department was on the scene to begin rescue efforts and extinguish the fire.

“Despite their best efforts,” Newman said. “The

driver of the vehicle was pronounced deceased.”

Authorities say the vehicle was only occupied by the driver and there were no other vehicles involved in the accident.

“The Madison Police Department would like to thank the Ridgeland Police Department, Ridgeland Fire Department and Madison Fire Department for their prompt response and assistance on scene,” Newman said.

Lawsuit

Continued from page A1

the county gave the land back to him that he had donated,” Espy told P&Z commissioners.

Espy later went on to say that upon completion of the I-55 ramps, the county would receive a check back for the payment.

Hawkins-Butler’s lawsuit points out several issues with the transaction.

First, the amount in question. The board only paid \$965,000, not \$1,030,700, and the check didn’t show up on the claims docket though it was cashed, the lawsuit alleges. Second, the lawsuit states the county still owned the land in question.

The lawsuit explains that in 2009, when the county first attempted to build the Reunion Parkway, the Bozeman family donated the land for the right-of-way. The initial memorandum of understanding approved called for a reversionary clause in the event that the county did not move forward with the project. However, that MOU had to be amended because the Mississippi Department of Transportation would not allow for a reversionary clause. The lawsuit states that

as of Sept. 15, 2009, the county owned the property in question.

In 2014, the board conveyed the land back to the Bozeman family based on the original MOU and the reversionary clause, something Hawkins-Butler contends in her lawsuit was illegal.

Last year, the board entered into a new MOU with the Bozeman family outlying the terms Espy explained in February 2023.

“While the Reunion Parkway extension has been funded and approved, the construction of an interchange with on-off ramps has not,” the lawsuit contends. “In sum, the board agreed for the Minnie J. Bozeman Family Limited Partnership to ‘donate’ the land that the Partnership did not own (and therefore to receive tax credits for the donation), and to allow the Partnership to hold public funds as a guarantee that MDOT will construct an interchange with on-off ramps.”

Hawkins-Butler’s lawsuit asserts that the donation of the 35 acres for right-of-way was also part of a deal to rezone 350 acres of land.

At the same February P&Z meeting, Espy said, “And I told him personally, and the Board confirmed, I don’t say anything without authorization of my Board, that we

would do our best to rezone this land so that he could begin planning for commercial projects, shopping center, office building, whatever.”

Espy went on to say that the county engineer even provided road drawings so the Bozeman family knew could plan for commercial development.

Hawkins-Butler also asserts in the lawsuit that the county violated the Mississippi Open Meetings Act, by meeting in private settings to discuss developments.

Griffin said the board members gave the lawsuit to Espy and did not wish to comment because of pending litigation, only adding that “Mary’s at her games again.”

This lawsuit is separate from a lawsuit filed earlier this summer by Madison the City and five subdivisions to stop the rezoning. Those subdivisions are Belle Terre, Cherry Hill, Ingleside, Reunion and Reserve.

They contend the Bozeman family did not meet the burden of proof for rezoning, saying there hasn’t been a

significant change in the character of the area.

SNORING SOLUTIONS CPAP ALTERNATIVES TMJ CARE

PAUL C. RILEY, DDS
Board Certified Orofacial Pain Specialist

Mississippi Orofacial Pain Specialists

108 South Maple St., Suite C, Ridgeland
(769) 567-2555 | www.mississippitmj.com

Crime

Continued from page A1

found three people had been shot, one of whom, Scott, was deceased, Hall said.

Deputies then encountered the suspect who was still shooting at one of the victims.

Deputies then engaged the suspect who was fatally injured in an exchange of gunfire with deputies.

“MBI is handling the investigation of the officer-involved shooting,” Hall said.

The deputies involved did not receive any serious physical injuries during this incident, Martin said.

MISSISSIPPI METROPOLITAN DANCE ACADEMY

MMDA

Register Now
Ages 3 and up

Ballet • Pointe • Jazz • Contemporary
Adult Ballet and Tap
3-6 Year Old Combo Classes
www.msmetroballet.com

(601) 853-6080 | 115B Homestead Dr. Madison, MS 39110

We Build Life by Relationship

Friends, after 30 years in ministry, I am known by most as Brother Royce. My given name, Royce R. Lott, Jr. is a bit formal, and I’m not a formal guy. As a bi-vocational pastor (FBC Satartia, MS) I have returned to the real estate industry and would count it pure joy to begin a relationship of service to you. Whatever your real estate needs might be, please consider allowing me to get to know you and serve you.

Contact me at 601-668-4584 (text or call) - broroyce1@gmail.com

H HOMETOWN PROPERTY GROUP
TheHometownPropertyGroup.com

Opinion & Editorials

Founded 1982

MADISON COUNTY JOURNAL

“To glorify God, and enjoy Him forever.”

JAMES E. PRINCE III
President and Publisher

MICHAEL SIMMONS
Associate Editor & Publisher

EDITORIALS

Thank you, Dolly!

“We got a very special thing here.”

Those are the words of restaurateur Porter Frazier on this weekend’s Dolly Parton fundraiser performance to benefit Marty Stuart’s Congress of County Music at the Ellis Theater in downtown Philadelphia, Mississippi.

His Porterhouse Party opens for Dolly featuring great food, live entertainment and a hope that out-of-town patrons will come back to visit us again.

This weekend should indeed be special for Philadelphia as country music fans and Marty’s friends from all over come to see Dolly Parton perform two shows at the Ellis on Saturday as part of the fundraiser for Marty Stuart’s Congress of Country Music.

With tickets going for \$3,751.00 Tuesday morning it will certainly be a generous crowd inside. Many are hoping just to catch a glance of Dolly on the big screen outside.

With the magnitude of people likely reaching new heights downtown, The Porterhouse will be hosting a party Saturday night at their 513 Main Street venue, according to Frazier.

Leading up to the party, they will also begin serving lunch during the week on Main Street, starting on Wednesday and running through Saturday, a welcome addition to downtown since the Coffee Bean across from Steve’s was the best place to grab a sandwich with a friend.

“I’m going to do everything in my power to provide an experience where people want to come back and visit our community again,” Frazier said. “We have so much to offer. And Frazier is right!

“The Porterhouse provides a unique uptown experience with great food, live local entertainment, and a comfortable atmosphere that celebrates Philadelphia.”

Biden confused on Iran

President Biden is treating Iran with mystifying deference given the Islamic Republic’s stubborn refusal to end its nuclear ambition.

If the administration has a strategy for converting conflict into cooperation, the president should hint at what is to come.

Otherwise, the only sensible conclusion is that we are witnessing inexcusable weakness in the face of Iranian intimidation.

Mr. Biden’s ongoing attempt to resurrect the Obama-era Iran nuclear deal, nixed during the Trump era as useless, have failed, and his chief Iran emissary, Robert Malley, was for months nowhere to be found.

Reportedly under investigation for suspicion of disclosing classified material to his Iranian counterparts, Mr. Malley recently turned up safe behind the walls of Princeton’s ivory tower. Rather than practice diplomacy, he is scheduled to teach it in the coming school year.

Iran has not missed a beat pursuing its nuclear program. The regime is “close to possibly testing a nuclear weapons device,” the Jerusalem Post reports. Intelligence from the Netherlands finds that Iran is employing “sophisticated uranium enrichment centrifuges” capable of enriching uranium to 90% bomb-grade, the Post writes.

Sweden reports that Iran “engages in industrial espionage, which is mainly aimed at the Swedish high-tech industry and Swedish products that can be used in nuclear weapons program.”

And Germany in 2022 tracked a “consistently high number of indications of proliferation relevant procurement attempts by Iran for its nuclear programs.”

In February of last year, U.S. officials announced that Iran’s breakout time for producing sufficient fissile material for a nuclear bomb was “weeks rather than months.” Eighteen months later, indica-

With the new Leisure and Recreation District status approved by the Mayor and Board of Alderman, patrons of one establishment are now able to take an alcoholic drink in a to-go cup with them as long as they stay within the confines of the downtown district.

This could be a good thing for the festival scene downtown like it is in. Oxford and other cities.

“There’s a lot of things happening with this event that have never happened in Philadelphia before. There will be a number of people walking around downtown, enjoying a show in a safe environment that other communities can’t offer. We got a very special thing here,” Frazier said.

There is a lot of excitement about the Congress of County Music and what the future holds

Porter House will have a buffet featuring Gulf Coast seafood, and an energetic band to get the party rocking.

Britt Gully and the Water Moccasins are set to perform a combo of homemade music and outlaw country.

The crowd can expect a low-budget, high-impact show from the band on Saturday night, it has been said.

“That guy is amazing and a real treasure. We are so fortunate to have him. I’m pumped up about having this party and showcasing some great local musicians,” Frazier said.

Gully’s specialty is rockabilly, gospel, and honky-tonk-twang as he grew up listening to Jimmie, Hank, and Waylon, Frazier said.

While Gully’s band is planning on getting in there and hitting a big lick, the really big show is Dolly at the Ellis and we should all be thankful she is giving her time to support Marty, our community and our state.

— *The Neshoba Democrat*

tions that Iran could be ready to test a device shouldn’t be surprising.

In light of these developments, Mr. Biden’s eagerness to accommodate Iranian interests is baffling.

In recent weeks, the president has bowed to the regime’s demands that no one should touch the 800,000 barrels of Iranian oil contained in a Greek tanker that was seized off the coast of Africa for violating international sanctions. The tanker is now anchored in U.S. waters near Texas, but Iran has threatened to retaliate against any U.S. company that offloads its crude.

Lawmakers on both sides of the political aisle are appalled that Mr. Biden would fall for the regime’s intimidation tactics. In an Aug. 16 letter spearheaded by Sen. Joni Ernst, Iowa Republican, and Sen. Richard Blumenthal, Connecticut Democrat, they wrote: “The enforcement of petroleum sanctions will become irrelevant if American citizens and companies involved constantly live in fear of Iranian retaliation.”

At the same time, U.S. officials recently announced a deal in which Iran agreed to free five imprisoned Americans in return for the release of \$6 billion in Iranian assets, held in South Korea, for the purchase of food and medicine. While happy that the suffering of their fellow citizens is soon to end, Americans should recognize that by paying a fortune for their liberation, Mr. Biden has just given our adversaries inventive to take Americans hostage.

Having failed through diplomacy to dissuade an enemy’s quest for nuclear weapons, Mr. Biden appears to have chosen appeasement as an alternative. Apparently, he has forgotten the other means of transforming conflict into cooperation: peace through strength.

— *The Washington Times*

RICH LOWRY

GOP race not quite as over as it looks

If it “got late early” in the old majestic Yankee Stadium with its long shadows, as the famous Yogi Berra quote had it, it’s gotten late before about the fourth inning in the Republican presidential race.

In 2016, Donald Trump loved to pump out the results of unreliable online polls that showed him trouncing his competitors by ridiculous margins.

Now, he doesn’t need to bother with the shoddy polls; he can do the same thing with blue-chip media polls. The new national CBS poll has him leading second-place Ron DeSantis by 46 points, 62-16. The latest Fox News poll had a more modest 37-point Trump lead. (Vivek Ramaswamy is third in both surveys, at 7 and 11% respectively.)

It’s sometimes said that Trump is the de facto incumbent in the race, and indeed these are the kind of numbers you’d expect of a sitting president who is sweeping marginal opponents to the side as he secures his party’s renomination. †

The top-line results aren’t that different from the primary race — such as it is — on the Democratic side. The Fox poll has Joe Biden beating Robert F. Kennedy, Jr. 64 to 17, with Marianne Williamson at 9.

Is there a mercy rule in presidential politics?

Trump could be forgiven for looking at his opponents and seeing: a highly touted governor whose campaign has steadily sunk in national polls

The GOP race is not quite as over as it looks, but Trump is running away with it in the lead.

as he’s shed staff and fired a campaign manager; a young, smooth-talking entrepreneur who isn’t a threat to him but is helpfully soaking up some share of the non-Trump vote; a sunny senator who has made some gains but certainly hasn’t broken out; a former vice president who is hated by MAGA (for all the wrong reasons); a former governor who is a gifted political pugilist but is unpopular in the party; and a bunch of others whose names he doesn’t necessarily need to know.

What’s not to like?

Even if one of the candidates surges and sweeps up all the current non-Trump vote, there’s simply not enough of it to get to 50 right now. No wonder Trump is talking as if the race is over, the Trump super PAC is running spots hitting Biden, and Trump says there’s no need for him to show up at the Republican debates.

The cockiness could well be justified, but a sense of inevitability can be a two-edged sword. On the one hand, it disheartens the opposition and communicates strength; on the other, it can fade into a high-handed sense of taking the voters for granted.

And Trump still has to win Iowa, where his support is a little softer. † After all the talk of having the election stolen

from him in 2020 and the chest-beating about his dominance now, a defeat there — in a clean process overseen by fellow Republicans — would be a stinging setback that might change the dynamic everywhere else.

The new NBC News/Des Moines Register poll has Trump at 42%, with DeSantis at 19% and South Carolina Sen. Tim Scott at 9%. That’s a substantial lead, but both DeSantis and Scott have large portions of the electorate saying they are their second choice or that they are actively considering them. Both also have high favorable ratings comparable to Trump’s.

In the portion of the survey conducted prior to the Georgia indictment, his lead was 38—20 over DeSantis — again, sizable, but not nearly enough to say he has this thing put away, not in the middle of August.

Iowa can break late. Former Pennsylvania Sen. Rick Santorum, who won Iowa in 2012, didn’t really start moving until late December. Former Arkansas Gov. Mike Huckabee, who won four years earlier, started his upward march around November. If someone is going to replicate this kind of climb, the big upward move may still be months away. †

So it looks late out there, no doubt, and has for some time, but it’s not over.

Rich Lowery is editor of National Review, a leading conservative magazine founded by William F. Buckley.

CHARLES HURT

DeSantis needs to learn how to connect

On the spectrum of things that Florida Gov. Ron DeSantis is good at, politics apparently is not one of them.

When Hillary Clinton was struggling to beat then-candidate Donald Trump in 2016, she famously attacked his voters.

“You could put half of Trump’s supporters into what I call the basket of deplorables — the racist, sexist, homophobic, xenophobic, Islamophobic, you name it,” she said.

In an interview Friday, Mr. DeSantis offered his own description for Mrs. Clinton’s basket of deplorables.

“We have a strand in our party that views supporting Trump as whether you are a RINO or not,” he said, using the common epithet for fake conservatives: “Republican in name only.”

“And so, you could be the most conservative person since sliced bread — unless you are kissing his rear end, they will call you a RINO,” Mr. DeSantis complained. “If you’re not rooted in principle — if all we are is listless vessels who follow whatever comes down the pike on Truth Social every morning — that’s not going to be a durable movement.”

Using a naval term for a disabled ship, Mr. DeSantis attacked Trump supporters as stupid, bootlicking suck-ups who cannot think for themselves. They are “listless vessels” who only repeat whatever they read on Truth Social and attack true conservatives — presumably, he is talking about himself here — as RINOs for not falling in line.

DeSantis campaign operatives later clarified that Mr. DeSantis was referring only to members of Congress who support Mr. Trump — not regular voters.

But regardless, in politics, if

If Mr. DeSantis wants a future in national politics, he needs to learn how to connect with voters

you are explaining, you are losing. And in terms of political malfeasance, Mr. DeSantis’ attack on Trump supporters is worse than Mrs. Clinton’s.

In the first place, Mr. DeSantis needs to win over these unthinking “listless vessels” if he wants to win the nomination. Attacking them as thoughtless slugs does not help.

Second, Mrs. Clinton got caught trashing Trump supporters while speaking at a private fundraiser and immediately walked back the comments. Mr. DeSantis made the remarks in a taped interview.

On the record.

Internal documents obtained last week by The New York Times revealed panicked DeSantis consultants advising Mr. DeSantis to start showing emotion. Not sure this is the best way to do that.

Mr. DeSantis has a tremendous record — both politically and in terms of conservative accomplishments in Florida. But from the moment he launched his campaign — on Twitter, of all places — he campaigns like he is trying to win the endorsement of National Review magazine.

But, boy, is he doing a terrible job convincing Republican voters outside of his home state that he has the guts, smarts and political savvy to inherit the America First political movement started by Mr. Trump.

A new poll out Saturday shows an 11 percentage-point collapse in Mr. DeSantis’ support among Republican voters over the past two months. He is now tied at 10% with a surging Vivek Ramaswamy. Both men

trail Mr. Trump in the poll by 46 points.

Mr. DeSantis’ highest level of support in that poll — at 29% support among Republican voters — was registered back in January, months before he got into the race. Since he announced — again, on Twitter! — it’s been all downhill for him.

Talk about a “listless vessel.”

A rule of thumb in politics while running for public office is to never talk about political mechanics. If you are a candidate and you find yourself playing political strategist in public, then you are pretty much doomed.

The reason Mr. Ramaswamy is surging is because he is always talking about his positive vision for the country. Mr. Trump is a ferocious fighter — but he is always fighting in the name of a clear, positive vision for the country.

It’s like Mr. DeSantis is stuck at nerd camp for politics, trying to check all these boxes about RINOs, listless vessels and sliced bread.

Show some emotion, Ron! So, he fat-shames a kid eating ice cream in Iowa.

“What is that? An Icee? That’s probably a lot of sugar, huh?” he says before moving to on the next small human to insult.

If Mr. DeSantis wants a future in national politics, he needs to learn how to connect with voters — not attack them. So far, the only thing Mr. DeSantis has done is reminded everyone that he never would have become governor of Florida in 2018 if Mr. Trump hadn’t endorsed him and campaigned for him.

Charles Hurt is the opinion editor at The Washington Times.

BIBLE SELECTION

By day the Lord commands his steadfast love, and at night his song is with me, a prayer to the God of my life.

— **Psalm 42:8 (ESV)**

2 hired at Ridgeland Parks

By JOHN LEE
john@neshobademocrat.com

Ridgeland Recreation and Parks recently welcomed two new hires to the city, Carly Brandon and Ben McDonald, to help Ridgeland grow and make things more enjoyable for residents through events and other festivities.

Brandon was hired as new Sponsorship and Marketing Coordinator for Recreation and Parks.

Brandon grew up in Ridgeland and graduated from Ridgeland High School in 2006, before graduating from Tulane University.

Brandon is married to Justin Brandon and has two children, Mason and Ella James.

McDonald also joined Recreation and Parks as the new Special Events Coordinator, and said he wants to help the city grow.

"I look forward to helping the City of Ridgeland grow and

improve its quality of life through various events for everyone," McDonald said.

McDonald comes to Ridgeland with years of experience coordinating athletic events with various organizations throughout the state.

He is also the Bicycle Safety Ambassador for Bike Walk Mississippi, a member of the Tri-County Mountain Bike Association, and a Mississippi College graduate. He is married to Taylor McDonald.

BIBLICAL PERSPECTIVES/J. Ligon Duncan III

The son of man will be delivered up

For thousands of years the Lord had been planning and predicting when the Messiah would give himself for the sins of his people. This brief passage serves as the introduction to the fulfillment of this ancient promise. I'd like you to see three things in this passage. First in verses 1 through 2, you'll see that Jesus is the knowing and willing sacrifice. Next, when considering the contrast between verse 2 and 5, you will see the sovereignty and love of the Father. Finally, in verses 3 through 5, you will see the wickedness of the chief priest and the elders. Let us consider God's Word together.

I. The Knowing and Willing Sacrifice

First in verses 1 – 2, we need to understand that Jesus was the knowing and willing sacrifice for our sins. Jesus knew what was going to happen, and he chose to embrace God's plan. He willingly went the way of the cross that he might be an offering for sin.

We see here from Jesus' specific testimony to the disciples that he knows what is coming. He knows that in two days he's going to be betrayed. He knows that he is going to suffer physically. He knows that he is going to experience the loss of the comfortable presence of the Father, with whom he has dwelt with from eternity. Despite knowing the horror and pain of the cross, he doesn't flee to Galilee. He marches right on to Jerusalem. Right on to Gethsemane, right on to the upper room, right on to Golgotha, right on to the horrors of the cross.

And I want you to understand my friend, Jesus willingly embraces that for you. And he embraces that knowing just how fickle your friendship is with him. He knows the disciples are going to abandon him in the next few hours. Yet Jesus says to the disciples, right before they betray him, "I have earnestly desired to sit down and eat this meal with you, for my blood is poured out for you for the forgiveness of sin." Let those words impact you. If you're a Christian today and struggling to believe Christ's love for you, remember that he went to the cross willingly, knowing just how fickle you are, just how weak you are, just how sinful you are, just how disappointing you are. That is mind boggling. And that's exactly what Jesus is

saying in this passage. We need to know that Jesus was the knowing and willing sacrifice for our sins.

II. The Sovereign and Loving Father

Then if you'd look at verses 2 and 5 and see the juxtaposition. We learn a second thing in this passage because in those verses we see a glorious expression of the sovereignty of God. We see contrasted in verse 2 the plan of God and in verse 5 the plan of man. Matthew is clearly highlighting the sovereignty of God in this passage.

We need to know that God's plan was sovereignly accomplished in Christ's death despite the plans of men. Don't miss what's going on here. Jesus says in verse 2, "Two days, the Passover is coming, and the Son of man is to be handed over for crucifixion. While simultaneously, Matthew tells us that the chief priest and the Sadducees were meeting in a secret, and do you know what they were saying? "We can't do this at the Passover festival. There will be rioting if we do this." So you have Jesus saying, "In two days, I'm going to be handed over." And you have the people who are going to arrest him illegally, who capture him, and who were involved in his execution say, "You know, we can't do this at this time. The plan won't work."

The contrast is striking. Jesus says, "I will be delivered up at the festival." The men who were going to deliver him up at the festival say, "We can't deliver him up at the festival." God is sovereign. Man is not. The very people who are planning against the Lord Jesus are saying they can't pull it off, while Jesus is saying, "They will because it is in accordance with the decree of God, My Father."

Ultimately it is God the Father who delivers up Jesus. As Paul writes, "He who spared not his own Son, but delivered him up." You see God's sovereignty. The Father delivers him up. What this means is that the cross was the provision of the Father's love. Jesus Christ was the perfect sacrifice of obedience, willingly bearing our sins because the Father loved us. If we don't understand that, we don't understand the cross. If we think that the cross is about Jesus trying to get the Father to love us, we don't understand the cross. The cross

was ordained by God the Father because he loved us. Octavius Winslow puts this in such a striking way: "Who delivered up Jesus to die? Not Judas for the money. Not Pilot for fear, not the Jews for envy. But the Father for love." God the Father, in His sovereign love instigates the emulation, the crucifixion of his Son because he loves you.

III. The Wicked Men

In verses 3 – 5, we see this cowardly plot of the religious leaders of Israel. We see a picture here of man's wickedness. And once again we need to know that our wickedness, though it's overruled by God, is culpable. We'll give an account one day for our wickedness, as these men would. The evil of the Sanhedrin's actions here is apparent. They're doing this behind closed doors in secret. They are planning the execution of a man who has not been tried and convicted. There's no court in any land in the world that would not recognize that as the appropriate judicial procedure. And though they were wicked men who had their own unsavory motive for doing this, no doubt these men were so deluded as to think what they were doing was the right thing.

You know sometimes we do things which at first seem right that are seriously wrong. And I have no question in my mind that these men were deluded enough to think that what they were doing was right. You know we can point out fingers at the chief priest and the scribes and elders of the Lord's people. And we scoff, "Tsk, tsk, how could you have done that?" But if we are indifferent to the Lord Jesus Christ, we are in no different of a position than they are. The Lord Jesus cannot be trifled with. The heavenly Father does not allow us to sit on the fence about him. We must either embrace him or reject him. Those are the only options. Have you trusted in him? Have you rested in him? Because if you're not for him, you are against him. We will be held accountable one day. May God enable us to embrace him as Savior.

The Rev. Dr. J. Ligon Duncan III is Chancellor and CEO of Reformed Theological Seminary. He can be reached at 601-923-1600 or by email at jhyde@rts.edu.

NOTICE OF A PUBLIC HEARING ON THE PROPOSED BUDGET AND PROPOSED TAX LEVIES FOR THE UPCOMING FISCAL YEAR FOR MADISON COUNTY, MISSISSIPPI

The Madison County Board of Supervisors will hold a public hearing on its proposed budget and proposed tax levies for fiscal year 2024 on September 5, 2023, 9:00 a.m. in the Board Room of the Chancery/Administrative Office Complex, 125 West North Street, Canton, Mississippi.

The Madison County Board of Supervisors, exclusive of the Madison County School District, is now operating with projected total budget revenue of \$150,160,796.16. Of that amount, 41.6 percent or \$62,498,075.16 is proposed to be financed through a total ad valorem tax levy. For next fiscal year, the proposed budget has total projected revenue of \$198,547,064.24. Of that amount, 33.6 percent or \$66,672,054.36 is proposed to be financed through a total ad valorem tax levy.

The Madison County Board of Supervisors, inclusive of the Madison County School District, is now operating with projected total budget revenue of \$346,834,302.57. Of that amount, 43.9 percent or \$152,454,689.16 is proposed to be financed through a total ad valorem tax levy. For next fiscal year, the proposed budget has total projected revenue of \$389,207,823.22. Of that amount, 37.5 percent or \$145,943,721.48 is proposed to be financed through a total ad valorem tax levy.

For next fiscal year, the Madison County Board of Supervisors plans to not increase your ad valorem tax millage rate, for property outside of the Southwest Madison Fire Protection District

For next fiscal year, the Madison County Board of Supervisors plans to increase your ad valorem tax millage rate in the Southwest Madison Fire Protection District by 2.0 mills, a total increase of \$37,261, in additional ad valorem tax collections. This increase means that you will pay more in ad valorem taxes on your real property.

A millage rate of 36.13 mills will produce the same amount of revenue from ad valorem taxes as was collected in the 2023 fiscal year. The millage rate for the 2023 fiscal year was 38.13.

The decision to not increase the ad valorem tax millage rate for fiscal year 2024 above the current fiscal year's ad valorem tax millage rate means you will not pay more in ad valorem taxes on your home, automobile tag, utilities, business fixtures and equipment and rental property outside of the Southwest Madison County Fire Protection District, unless the assessed value of your property has increased for fiscal year 2023.

Any citizen of Madison County, Mississippi is invited to attend this public hearing on the proposed budget and tax levies for fiscal year 2024 and will be allowed to speak for a reasonable amount of time and offer tangible evidence before any vote is taken.

Witness the signature of said Board of Supervisors, this the 7th day of August 2023.

The Madison County Board of Supervisors
/s/
Gerald Steen, District 3
Board President



INVEST in the FUTURE
of the CHURCH



When you give to Reformed Theological Seminary, you invest in students like these men and women, called and equipped to serve in God's kingdom in more than 65 countries around the world.

rts.edu/give

Public Notices

IN THE CHANCERY COURT OF MADISON COUNTY, MISSISSIPPI

IN RE: KARANDEEP SINGH , A MINOR CAUSE NO.: 23-688B PALWINDER SINGH, PETITIONER

RULE 81 SUMMONS

THE STATE OF MISSISSIPPI

TO: JAGDEEP SINGH ADDRESS UNKNOWN

NOTICE TO PARTY OF INTEREST

THE COMPLAINT WHICH IS ATTACHED TO THIS SUMMONS IS IMPORTANT AND YOU MUST TAKE IMMEDIATE ACTION TO PROTECT YOUR RIGHTS.

YOU ARE SUMMONED to appear and defend against said Complaint at **9:00 AM** on the 5th day of **September 2023** at the courthouse at the **Chancery Court of Madison County** , located at **146 W Center Street, Canton, Mississippi 39046** and in your failing to appear and defend, a judgment will be entered against you for the money or things demanded in the Complaint or Petition.

You are not required to file an answer or other pleadings, but you may do so if you so desire . If you choose to file an answer the original must be filed with the Madison County Chancery Clerk, Canton, Mississippi. Issued under my hand and the seal of said Court, this 30th day of June, 2023. Ronny Lott Chancery Clerk, Madison County, Mississippi

IN THE CHANCERY COURT OF MADISON COUNTY, MISSISSIPPI

IN THE MATTER OF THE ESTATE OF STELLA WOLOSIN, DECEASED PROBATE NO. 2023-821 W

NOTICE TO CREDITORS

Letters Testamentary having been granted on the 17th day of August, 2023, by the Chancery Court of Madison County, Mississippi to the undersigned Executor of the Estate of Stella Wolosin, Deceased, notice is hereby given to all persons having claims against said estate to present the same to the Clerk of this Court for probate and registration according to law, within ninety (90) days from the first publication of this notice, or they will be forever barred.

THIS the 21st day of August, 2023.

Linda C. Macksoud, Executor of the Estate of Stella Wolosin, Deceased

Philip A. Buchanan MSB #102626 Attorney for Executor

COURTNEY ELDER LAW ASSOCIATES

7708 Old Canton Road, Suite B Madison, Mississippi 39110 Telephone: (601) 987-3000

IN THE CHANCERY COURT OF MADISON COUNTY, MISSISSIPPI

IN THE MATTER OF THE APPOINTMENT OF A GUARDIAN FOR MATEO TOMAS BALTAZAR, A MINOR CAUSE NO: 23-847 FLORINDA BALTAZAR PETITIONER

RULE 81 SUMMONS BY PUBLICATION

THE STATE OF MISSISSIPPI COUNTY OF MADISON

TO: Respondents Pascual Tomas Baltazar and Juana Baltazar Tomas non-residents of the State of Mississippi, or not to be found therein, and whose residence, post office, and street address is unknown to Petitioner after diligent search and inquiry:

You have been made Respondents in the suit filed in this Court by Florida Baltazar Tomas , Petitioner herein, seeking appointment as Guardian for Mateo Tomas Baltazar, a minor. There are no other Respondents other than yourself. You are summoned to appear and defend against the Petition filed against you in this action at 9:00 AM on the 2 nd day of November, 2023, at the Yazoo County Courthouse, located in Yazoo City, Mississippi, and in case of your failure to appear and defend, a judgment will be entered against you for the money or other things demanded in the Petition.

You are not required to file an answer or other pleading but you may do so if you desire.

Issued under my hand and seal of said Court, this the 11th day of August, 2023.

Hon. Ronny Lott, Madison County Chancery Clerk

BY Rita Carpenter, D.C. Requested By:

John B. Hunt, IV, MSB#103847 Hunt Law Firm, PLLC 1640 Lelia Dr., Ste. 105 Jackson, MS 39216 Tel: 601-214-3211 email: jack@jbhlegal.com

PUBLIC NOTICE

NOTICE is hereby given to all persons interested in or in anyway affected thereby, that **Owner Cameron Brown** has filed with the City Clerk/Administrative Director of the City of Madison, Mississippi, an application for a **variance to allow for an accessory building height increase from 10 feet to 12.5 feet**, in a R-1 (Single-Family Residential District) zoning district, as provided by the Zoning Ordinance of the City of Madison, Mississippi. Property located at 2036 Tidewater Lane, Lot 36, Treasure Cove Subdivision, Parcel Number 072H-28A-071/00.00.

Notice is further given that the Planning and Zoning Commission of the City of Madison, Madison County, Mississippi, will have a regular meeting at 6:30 p.m. on Monday, September 11, 2023, in the Municipal Courtroom of the Madison Justice Complex, at 2001 Main Street in Madison, Mississippi, and at such time, date and place hold and conduct a public hearing at which time all parties in interest and citizens shall have the opportunity to be heard thereon, either in person, by petition, or by counsel.

For additional information, contact Madison City Hall, Planning Department at 601.856.7116.

By: s/Susan B. Crandall

Public Notices

Susan B. Crandall, City Clerk Director of Finance and Administration

PUBLIC NOTICE

NOTICE is hereby given to all persons interested in or in anyway affected thereby, that **Owner Bettye Freeny** has filed with the City Clerk/Administrative Director of the City of Madison, Mississippi, an application for a **variance to allow for a decrease in the rear yard setback from 30 feet to 14 feet**, in a R-4 (Patio Home District) zoning district, as provided by the Zoning Ordinance of the City of Madison, Mississippi. Property located at 157 Brisage Lane, Lot 21, Brisage Subdivision, Parcel Number 072B-09C-139/00.00. Zoned R-4 (Patio Home District).

Notice is further given that the Planning and Zoning Commission of the City of Madison, Madison County, Mississippi, will have a regular meeting at 6:30 p.m. on Monday, September 11, 2023, in the Municipal Courtroom of the Madison Justice Complex, at 2001 Main Street in Madison, Mississippi, and at such time, date and place hold and conduct a public hearing at which time all parties in interest and citizens shall have the opportunity to be heard thereon, either in person, by petition, or by counsel.

For additional information, contact Madison City Hall, Planning Department at 601.856.7116.

By: s/Susan B. Crandall Susan B. Crandall, City Clerk Director of Finance and Administration

PUBLIC NOTICE

NOTICE is hereby given to all persons interested in or in anyway affected thereby, that **Owner Brooks Bryan** has filed with the City Clerk/Administrative Director of the City of Madison, Mississippi, an application for a **variance to allow for an accessory building height increase from 10 feet to 19 feet 9 inches**, in a RE-B (Residential Estates District) and PUD (Planned Unit Development) Zoning District, as provided by the Zoning Ordinance of the City of Madison, Mississippi. Property located at 329 Covington Cove, Lot C-26, Reunion Subdivision, Parcel Number 081E-22-255/00.00.

For additional information, contact Madison City Hall, Planning Department at 601.856.7116.

By: s/Susan B. Crandall Susan B. Crandall, City Clerk Director of Finance and Administration

PUBLIC NOTICE

NOTICE is hereby given to all persons interested in or in anyway affected thereby, that **Owner Brooks Bryan** has filed with the City Clerk/Administrative Director of the City of Madison, Mississippi, an application for a **variance to allow for an accessory building height increase from 10 feet to 19 feet 9 inches**, in a RE-B (Residential Estates District) and PUD (Planned Unit Development) Zoning District, as provided by the Zoning Ordinance of the City of Madison, Mississippi. Property located at 329 Covington Cove, Lot C-26, Reunion Subdivision, Parcel Number 081E-22-255/00.00.

For additional information, contact Madison City Hall, Planning Department at 601.856.7116.

By: s/Susan B. Crandall Susan B. Crandall, City Clerk Director of Finance and Administration

PUBLIC NOTICE

NOTICE is hereby given to all persons interested in or in anyway affected thereby, that **Owner Brooks Bryan** has filed with the City Clerk/Administrative Director of the City of Madison, Mississippi, an application for a **variance to allow for an accessory building height increase from 10 feet to 19 feet 9 inches**, in a RE-B (Residential Estates District) and PUD (Planned Unit Development) Zoning District, as provided by the Zoning Ordinance of the City of Madison, Mississippi. Property located at 329 Covington Cove, Lot C-26, Reunion Subdivision, Parcel Number 081E-22-255/00.00.

For additional information, contact Madison City Hall, Planning Department at 601.856.7116.

By: s/Susan B. Crandall Susan B. Crandall, City Clerk Director of Finance and Administration

PUBLIC NOTICE

NOTICE is hereby given to all persons interested in or in anyway affected thereby, that **Owner Brooks Bryan** has filed with the City Clerk/Administrative Director of the City of Madison, Mississippi, an application for a **variance to allow for an accessory building height increase from 10 feet to 19 feet 9 inches**, in a RE-B (Residential Estates District) and PUD (Planned Unit Development) Zoning District, as provided by the Zoning Ordinance of the City of Madison, Mississippi. Property located at 329 Covington Cove, Lot C-26, Reunion Subdivision, Parcel Number 081E-22-255/00.00.

For additional information, contact Madison City Hall, Planning Department at 601.856.7116.

By: s/Susan B. Crandall Susan B. Crandall, City Clerk Director of Finance and Administration

PUBLIC NOTICE

NOTICE of sale is hereby given in accordance with the Mississippi Statutes governing the sale of abandoned motor vehicles for the following: 2000 MERCEDES ML, VIN # 4JGB54E4YA167478, \$ 2755.25. Public sale of this abandoned/unclaimed vehicle and its contents will be held on Friday August 25, 2023 at Big Byrd Towing LLC located at 120 E. State St. Ridgeland, MS 39157 at 10:00 A.M.

IN THE CHANCERY COURT OF MADISON COUNTY, MISSISSIPPI

IN THE MATTER OF THE ESTATE OF SALLY HUBBARD TOWNS, DECEASED PROBATE NO. 2023-776 B

NOTICE TO CREDITORS

Letters Testamentary having been granted on the 31st day of July, 2023, by the Chancery Court of Madison County, Mississippi to the undersigned Executor of the Estate of Sally Hubbard Towns, Deceased, notice is hereby given to all persons having claims against said estate to present the same to the Clerk of said Court for probate and registration according to law, within ninety (90) days from the first publication of this notice, or they will be forever barred.

THIS the 4th day of August, 2023.

Jane Hubbard Anderson, Executor of the Estate of Sally Hubbard Towns, Deceased

Richard A. Courtney, MSB #7722 Philip A. Buchanan, MSB #102626 Attorneys for Executor

COURTNEY ELDER LAW ASSOCIATES

7708 Old Canton Road 4400 Old Canton Road, Suite 220 Jackson , Mississippi 39211 Telephone: (601) 987-3000

SUBSTITUTED TRUSTEE'S NOTICE OF SALE

WHEREAS, on August 20, 2021, Radco Construction, LLC, a Mississippi limited liability company executed a Deed of Trust to Donald G. Griffin, Trustee for Community Bank of Mississippi, Beneficiary, which Deed of Trust was recorded in the office of the Chancery Clerk of Madison County, Mississippi in Instrument no. 934508 at Book 4090, Page 477; and, WHEREAS, Community Bank of Mississippi, the present owner of the indebtedness and holder of the above described Deed of Trust, appointed Jeff D. Rawlings in the place and stead of Donald G. Griffin or any subsequently appointed substituted trustee, said Substitution of Trustee being recorded in the office of the Chancery Clerk of said County in Instrument no. 954353 at Book 4193, Page 219; and, WHEREAS, default having been made in the terms and conditions of said Deed of Trust and the entire debt secured thereby having been declared to be due and payable in accordance with the terms of said Deed of Trust, Community Bank of Mississippi, the legal holder of said indebtedness, hav-

Public Notices

ing requested the undersigned Substituted Trustee to execute the trust and sell said land and property in accordance with the terms of said Deed of Trust and for the purpose of raising the sums due thereunder, together with attorney's fees, trustee's fees and expenses of sale.

NOW, THEREFORE, I, Jeff D. Rawlings, Substituted Trustee in said Deed of Trust, will on the 15th day of September, 2023, offer for sale at public outcry and sell within legal hours (being between the hours of 11:00 a.m. and 4:00 p.m.), at the Front Door of the Madison County Courthouse, 128 W. North Street, Canton, Mississippi to the highest and best bidder for cash the following described property situated in Madison County, State of Mississippi, to-wit: Lots 1124 and 1125, Heron's Bay of Caroline, a subdivision according to a map or pat thereof which is on file and of record in the office of the Chancery Clerk of Madison County at Canton, Mississippi, in Plat Cabinet F, Slides 180A and 180B reference to which is hereby made in aid of and as a part of this description.

I WILL CONVEY only such title as is vested in me as Substituted Trustee. WITNESS MY SIGNATURE, this the 18th day of August, 2023.

/s/ Jeff D. Rawlings Jeff D. Rawlings, Substituted Trustee for Community Bank of Mississippi

Dates of Publication: August 24, 31, September 7, 14, 2023

Jeff Rawlings Rawlings & MacInnis P.O. Box 1789 Madison, Ms. 39130 601-898-1180

PUBLIC NOTICE

NOTICE is hereby given to all persons interested in or in anyway affected thereby, that **Owner Cameron Brown** has filed with the City Clerk/Administrative Director of the City of Madison, Mississippi, an application for a **variance to allow for a decrease in the side yard setback from 10 feet to 2 feet on one side to allow for an accessory structure**, in a R-1 (Single-Family Residential District) zoning district, as provided by the Zoning Ordinance of the City of Madison, Mississippi. Property located at 2036 Tidewater Lane, Lot 36, Treasure Cove Subdivision, Parcel Number 072H-28A-071/00.00.

For additional information, contact Madison City Hall, Planning Department at 601.856.7116.

By: s/Susan B. Crandall Susan B. Crandall, City Clerk Director of Finance and Administration

PUBLIC NOTICE

NOTICE is hereby given to all persons interested in or in anyway affected thereby, that **Owner Cameron Brown** has filed with the City Clerk/Administrative Director of the City of Madison, Mississippi, an application for a **variance to allow for a decrease in the side yard setback from 10 feet to 2 feet on one side to allow for an accessory structure**, in a R-1 (Single-Family Residential District) zoning district, as provided by the Zoning Ordinance of the City of Madison, Mississippi. Property located at 2036 Tidewater Lane, Lot 36, Treasure Cove Subdivision, Parcel Number 072H-28A-071/00.00.

For additional information, contact Madison City Hall, Planning Department at 601.856.7116.

By: s/Susan B. Crandall Susan B. Crandall, City Clerk Director of Finance and Administration

PUBLIC NOTICE

NOTICE is hereby given to all persons interested in or in anyway affected thereby, that **Owner Cameron Brown** has filed with the City Clerk/Administrative Director of the City of Madison, Mississippi, an application for a **variance to allow for a decrease in the side yard setback from 10 feet to 2 feet on one side to allow for an accessory structure**, in a R-1 (Single-Family Residential District) zoning district, as provided by the Zoning Ordinance of the City of Madison, Mississippi. Property located at 2036 Tidewater Lane, Lot 36, Treasure Cove Subdivision, Parcel Number 072H-28A-071/00.00.

For additional information, contact Madison City Hall, Planning Department at 601.856.7116.

By: s/Susan B. Crandall Susan B. Crandall, City Clerk Director of Finance and Administration

PUBLIC NOTICE

NOTICE is hereby given to all persons interested in or in anyway affected thereby, that **Owner Cameron Brown** has filed with the City Clerk/Administrative Director of the City of Madison, Mississippi, an application for a **variance to allow for a decrease in the side yard setback from 10 feet to 2 feet on one side to allow for an accessory structure**, in a R-1 (Single-Family Residential District) zoning district, as provided by the Zoning Ordinance of the City of Madison, Mississippi. Property located at 2036 Tidewater Lane, Lot 36, Treasure Cove Subdivision, Parcel Number 072H-28A-071/00.00.

For additional information, contact Madison City Hall, Planning Department at 601.856.7116.

By: s/Susan B. Crandall Susan B. Crandall, City Clerk Director of Finance and Administration

PUBLIC NOTICE

NOTICE is hereby given to all persons interested in or in anyway affected thereby, that **Owner Cameron Brown** has filed with the City Clerk/Administrative Director of the City of Madison, Mississippi, an application for a **variance to allow for a decrease in the side yard setback from 10 feet to 2 feet on one side to allow for an accessory structure**, in a R-1 (Single-Family Residential District) zoning district, as provided by the Zoning Ordinance of the City of Madison, Mississippi. Property located at 2036 Tidewater Lane, Lot 36, Treasure Cove Subdivision, Parcel Number 072H-28A-071/00.00.

For additional information, contact Madison City Hall, Planning Department at 601.856.7116.

By: s/Susan B. Crandall Susan B. Crandall, City Clerk Director of Finance and Administration

Public Notices

your biological child, Gursahib Singh, An eleven (11) year old unmarried male . **YOU ARE SUMMONED** to appear and defend against said Complaint at **1:30 PM** on the **10th day of October 2023** , at the courthouse at the **Chancery Court of Madison County** , located at **146 W Center Street, Canton, Mississippi 39046**, Before the **Honorable Judge James C. Walker, Chancellor** and in your failing to appear and defend, a judgment will be entered against you for the money or things demanded in the Complaint or Petition. You are not required to file an answer or other pleadings, but you may do so if you so desire . If you choose to file an answer the original must be filed with the Madison County Chancery Clerk, Canton, Mississippi. Issued under my hand and the seal of said Court, this 3rd day of August 2023.

Ronny Lott Chancery Clerk, Madison County, Mississippi

IN THE CHANCERY COURT OF MADISON COUNTY, MISSISSIPPI

IN RE: ESTATE OF MARY ALICE JONES WILLIAMS, DECEASED COREY WILLIAMS, PETITIONER NO. 23-744 B

NOTICE TO CREDITORS Letters of administration having been granted on July 26, 2023, to the undersigned by the Chancery Clerk of Madison County, Mississippi, upon the estate of Mary Alice Jones Williams, deceased, notice is hereby given to all persons having claims against the estate of Mary Alice Jones Williams, deceased, to have same probated and registered by the clerk of the above named court within ninety (90) days from the 10th day of August, 2023, which is the date of first publication of this notice or they will be forever barred. WITNESS MY SIGNATURE, August 3, 2023. Corey Williams, Administrator, Estate of Mary Alice Jones Williams, Deceased

By: /s/ John R. Reeves John R. Reeves, MSB#4699 Law Offices of John R. Reeves, P.C. 355 South State Street Jackson, Mississippi 39201 601-355-9600

IN THE CHANCERY COURT OF MADISON COUNTY, MISSISSIPPI

IN THE MATTER OF THE LAST WILL AND TESTAMENT OF JOSEPH FRANCIS HOLLIER, DECEASED CAUSE NO. 2023-741 (B)

NOTICE TO CREDITORS

Letters Testamentary having been granted on the 31st day of August, 2023, by the Chancery Court of Madison County, Mississippi, to the undersigned Executor under the Last Will and Testament of Joseph Francis Hollier, deceased, notice is hereby given to all persons having claims against said estate to present the same to the Clerk of this Court for probate and registration according to law, within ninety (90) days from the first publication of this notice, or they will be forever barred.

THIS, the 10th day of August, 2023.

/s/ Susan Hollier McMichael SUSAN HOLLIER McMICHAEL, Executor under the Last Will and Testament of Joseph Francis Hollier, deceased

PUBLISHED:

SAMUEL H. WILLIFORD, MSB #100095 WILLIFORD, McALLISTER, JACOB-BUS & WHITE, LLP ATTORNEYS AT LAW 303 Highland Park Cove, Suite A Ridgeland, Mississippi 39157 (601) 991-2000

RESOLUTION OF INTENT TO LEVY A TWO (2) MIL INCREASE FOR THE PURPOSES OF PROVIDING FIRE PROTECTION AND FOR THE OPERATION, SUPPORT AND MAINTENANCE OF THE NEWLY ENLARGED SOUTH-WEST MADISON COUNTY FIRE PROTECTION DISTRICT

WHEREAS, pursuant to §19-5-189(2)(c) MS Code of 1972 (Annotated), which sets forth the process of levying millage increases for the purpose of supporting the operation, support, and maintenance of fire protection districts in the state of Mississippi ("fire millage"); and

WHEREAS, on June 5, 2023, the Madison County Board of Supervisors approved the Petition for Annexation presented to it by the South-West Madison County Fire Protection District to incorporate the proposed annexed area, shown on Exhibit "A" attached hereto, into the boundaries of the South-West Madison County Fire Protection District; and

WHEREAS, on July 3, 2023, after being duly noticed, a public hearing was conducted by the Madison County Board of Supervisors for the purpose of receiving public input regarding enlargement of the boundaries, by annexation, of the South-West Madison County Fire Protection District, and there being no objection being registered or heard on the matter, the Madison County Board of Supervisors adopted a resolution to approve said annexation, finding that the annexation by the fire protection district was justified by public convenience and necessity, and that the action was sound and desirable (see July 3, 2023 minutes of Madison County Board of Supervisors, attached herein as Exhibit "B"); and

WHEREAS, after finding that the annexation was well taken, and to support the operation and maintenance of the newly enlarged South-West Madison County Fire Protection District, and its need for additional revenues, the Madison County Board of Supervisors has determined that a two (2) mil increase for fire protection is necessary and appropriate, increasing the current millage of 5.62 to 7.62 mils; and that such an increase in fire millage for the purposes of fire protection in the newly enlarged jurisdiction of the South-West Madison County Fire Protection District should be adopted by approval of the Resolution herein.

THEREFORE BE IT RESOLVED, in order to defray the cost of fire protection in the newly enlarged territory of the South-West Madison County Fire Protection District., and in order to support the operation of the fire district, as a whole, the Madison County

Public Notices

Board of Supervisors, pursuant to this Resolution, notices its Intent to Levy a Two-Mil Increase upon the users and patrons, and all who are otherwise affected, impacted and serviced by the offering of fire protection from the South-West Madison County Fire Protection District, the effect of which is to increase the fire millage from 5.62 mils, to 7.62 mils.

FURTHER BE IT RESOLVED, that this Resolution shall be published once per week, for a period of three (3) weeks, in a newspaper having a general circulation within the county, and by the posting of same at three (3) public places, for a period of twenty-one (21) days during the time of its publishing in the newspaper.

MOTION TO APPROVE THE RESOLUTION OF INTENT TO LEVY A TWO-MIL INCREASE TO SUPPORT THE OPERATIONS OF THE NEWLY ENLARGED JURISDICTION OF THE SOUTH-WEST MADISON COUNTY FIRE PROTECTION DISTRICT was made by Supervisor Steen and seconded by Supervisor Banks, and said RESOLUTION OF INTENT WAS APPROVED, by the following vote:

District 1 Supervisor Sheila Jones AYE
District 2 Supervisor Trey Baxter AYE
District 3 Supervisor Gerald Steen AYE
District 4 Supervisor Karl Banks AYE
District 5 Supervisor Paul Griffin AYE

IN THE CHANCERY COURT OF MADISON COUNTY, MISSISSIPPI

IN RE: ARSHDEEP SINGH , A MINOR CAUSE NO.: 2023-727B RAMANJEET SINGH, PETITIONER

RULE 81 SUMMONS

THE STATE OF MISSISSIPPI

TO: MANJIT KAUR WHEREABOUTS UNKNOWN

NOTICE TO PARTY OF INTEREST

THE COMPLAINT WHICH IS ATTACHED TO THIS SUMMONS IS IMPORTANT AND YOU MUST TAKE IMMEDIATE ACTION TO PROTECT YOUR RIGHTS.

YOU ARE SUMMONED to appear and defend against said Complaint at **8:30 AM** on the **6th day of November 2023** , at the courthouse at the **Chancery Court of Madison County** , located at **146 W Center Street, Canton, Mississippi 39046** and in your failing to appear and defend, a judgment will be entered against you for the money or things demanded in the Complaint or Petition.

You are not required to file an answer or other pleadings, but you may do so if you so desire . If you choose to file an answer the original must be filed with the Madison County Chancery Clerk, Canton, Mississippi. Issued under my hand and the seal of said Court, this 14th day of August 2023.

Ronny Lott Chancery Clerk, Madison County, Mississippi

IN THE CHANCERY COURT OF MADISON COUNTY, MISSISSIPPI

IN RE: ARSHDEEP SINGH , A MINOR CAUSE NO.: 2023-727B RAMANJEET SINGH, PETITIONER

RULE 81 SUMMONS

THE STATE OF MISSISSIPPI

TO: LAKHVIR SINGH WHEREABOUTS UNKNOWN

NOTICE TO PARTY OF INTEREST

THE COMPLAINT WHICH IS ATTACHED TO THIS SUMMONS IS IMPORTANT AND YOU MUST TAKE IMMEDIATE ACTION TO PROTECT YOUR RIGHTS.

YOU ARE SUMMONED to appear and defend against said Complaint at **8:30 AM** on the **6th day of November 2023** , at the courthouse at the **Chancery Court of Madison County** , located at **146 W Center Street, Canton, Mississippi 39046** and in your failing to appear and defend, a judgment will be entered against you for the money or things demanded in the Complaint or Petition.

Public Notices

thence run South 26 degrees 04 minutes 40 seconds East along said radial line, a distance of 51.01 feet to a point 95 feet Northwesterly of measured radially from the centerline of said survey at Station 830+75; thence run Northwesterly along the circumference of a circle to the right with a radius of 2004.85 feet, an arc distance of 69.90 feet and a chord bearing North 64 degrees 55 minutes 16 seconds East for a distance of 69.89 feet to a point 95 feet Northwesterly of measured radially from the centerline of said survey at Station 831+41.58; thence run North 70 degrees 20 minutes 42 seconds East, a distance of 259.19 feet to a point 75 feet Northwesterly of and perpendicular to the centerline of said survey at Station 834+00; thence run North 64 degrees 57 minutes 53 seconds East, a distance of 600.08 feet to a point 85 feet Northwesterly of and perpendicular to the centerline of said survey at Station 840+00; thence run North 58 degrees 55 minutes 09 seconds East, a distance of 111.44 feet to the said Northwestern right-of-way line being 98.58 feet Northwesterly of and perpendicular to the centerline of said survey at Station 841+10.61; thence run South 21 degrees 11 minutes 00 seconds West along said right-of-way line, a distance of 55.08 feet to the POINT OF BEGINNING, containing 0.870 acres (37,902 square feet) of land, more or less, situated in and a part of the West 1/2 of the Northeast 1/4 and the East 1/2 of the Northwest 1/4 of Section 27, Township 9 North, Range 2 East, in the City of Canton, Madison County, Mississippi.

Being also described as follows:

DESCRIPTION (Survey) A parcel or tract of land, containing 4.1259 acres (179,725.18 Sq. Ft.), more or less, lying and being situated in the NW 1/4 of the NE 1/4 and the NE 1/4 of the NW 1/4 of Section 27, T9N-R2E, Madison County, Mississippi, being the Lelia W. Eldridge property as described in Deed Book 541 at Page 94 of the Records of the Office of the Chancery Clerk of said Madison County, at Canton, Mississippi, and being more particularly described as follows:

COMMENCING at Station 840+50.05 on the Northerly and Westerly Right-Of-Way of Mississippi Highway No. 22 (Federal Aid Project No. S-351(1)), said point being the SE corner of the above referenced Lelia W. Eldridge property, said point also being and lying 3199.63 feet East and 531.67 feet South of a found iron pin at the NW corner of Section 27, T9N-R2E, Madison County, Mississippi; run thence

Along the Southerly, Westerly and Northerly boundary of said Lelia W. Eldridge property to points at each of the following calls;

South 66 degrees 02 minutes 00 seconds West for a distance of 834.70 feet; thence

220.90 feet along the arc of a 1960.08 foot radius curve to the left, said arc having a 220.78 foot chord which bears South 62 degrees 48 minutes 00 seconds West; thence

South 89 degrees 59 minutes 00 seconds West for a distance of 85.00 feet; thence

North 40 degrees 52 minutes 00 seconds East for a distance of 160.41 feet to an iron pin and POINT OF BEGINNING of the herein described property; thence

Along the Northerly and Easterly boundary of said Lelia W. Eldridge property to iron pins at each of the following calls;

Continue North 40 degrees 52 minutes 00 seconds East for a distance of 443.59 feet; thence

North 53 degrees 46 minutes 00 seconds East for a distance of 57.90 feet; thence

North 62 degrees 00 minutes 00 seconds East for a distance of 85.50 feet; thence

North 74 degrees 57 minutes 00 seconds East for a distance of 91.60 feet; thence

South 87 degrees 42 minutes 00 seconds East for a distance of 216.00 feet; thence

North 88 degrees 04 minutes 00 seconds East for a distance of 185.60 feet; thence

South 18 degrees 10 minutes 00 seconds East for a distance of 75.26 feet to an iron pin lying on the Northerly boundary of the Mississippi Major Economic Impact Authority property as described in Deed Book 485 at Page 723 of the Records of said Madison County, Mississippi; thence

Along the Northerly boundary of said Mississippi Major Economic Impact Authority property to iron pins at each of the following calls;

South 59 degrees 02 minutes 33 seconds West for a distance of 62.55 feet; thence

South 65 degrees 05 minutes 17 seconds West for a distance of 600.08 feet; thence

South 70 degrees 28 minutes 06 seconds West for a distance of 259.19 feet; thence

69.89 feet along the arc of a 2004.85 foot radius curve to the left, said arc having a 69.89 foot chord which bears South 65 degrees 02 minutes 40 seconds West; thence

North 25 degrees 57 minutes 16 seconds West for a distance of 46.04 feet to the POINT OF BEGINNING of the above described parcel or tract of land.

LESS AND EXCEPT;

A parcel or tract of land, containing 164.15 acres, more or less, lying and being situated in Section 28, T9N-R2E, Madison County, Mississippi, being a part of the Walker Lands II, LLC property as described in Deed Book 3385 at Page 454 of the Records of the Office of the Chancery Clerk of said Madison County, at Canton, Mississippi, and being more particularly described as follows:

COMMENCING at the SW corner of the SW 1/4 of Section 29, T9N-R2E, Madison County, Mississippi; run thence

East along the Southerly boundary of the SW 1/4 of said Section 29, T9N-R2E, for a distance of 2,667.77 feet to the SE corner, thereof, said point also lying at the SW corner of a parcel of land described as the "West 1/2 of the SE 1/4 less a strip of 4.0 chains evenly off East side of same"; thence

Continue East along the Southerly boundary of said parcel of land described as the "West 1/2 of the SE 1/4 less a strip of 4.0 chains evenly off East side of same" for a distance of 1,069.89 feet

Public Notices

to the SE corner, thereof, said point also being and lying at the SW corner of Parcel 2 of the above referenced Walker Lands II, LLC property; thence

North along the Easterly boundary of said parcel of land described as the "West 1/2 of the SE 1/4 less a strip of 4.0 chains evenly off East side of same" and the Westerly boundary of Parcel 2 of said Walker Lands II, LLC property, for a distance of 494.94 feet; thence

Continue North along the Easterly boundary of said parcel of land described as the "West 1/2 of the SE 1/4 less a strip of 4.0 chains evenly off East side of same", the Easterly boundary of a parcel of land described as the "SW 1/4 of the NE 1/4 less a strip of 4.0 chains evenly off East side of same" and the Westerly boundary of Parcel 2 of said Walker Lands II, LLC property, for a distance of 2,702.87 feet to an iron pin; thence

Leaving the Easterly boundary of a said parcel of land described as the "SW 1/4 of the NE 1/4 less a strip of 4.0 chains evenly off East side of same" and the Westerly boundary of Parcel 2 of said Walker Lands II, LLC property, run East for a distance of 4255.16 feet to an iron pin lying on the Easterly boundary of the NW 1/4 of Section 28, T9N-R2E, said point also lying on the Westerly boundary of the NE 1/4 of said Section 28, T9N-R2E and POINT OF BEGINNING of the herein described property; thence

North along the Westerly boundary of the NE 1/4 of said Section 28, T9N-R2E, for a distance of 2,081.47 feet to an iron pin lying at the NW corner, thereof; thence

East along the Northerly boundary of the NE 1/4 of said Section 28, T9N-R2E, for a distance of 2,481.56 feet to an iron pin; thence

Leaving the Northerly boundary of the NE 1/4 of said Section 28, T9N-R2E, run to points at each of the following calls;

South 01 degrees 22 minutes 39 seconds East for a distance of 1,260.46 feet to an iron pin; thence

572.40 feet along the arc of a 825.00 foot radius curve to the right, said arc having a 560.99 foot chord which bears South 18 degrees 29 minutes 56 seconds West to an iron pin; thence

South 38 degrees 22 minutes 31 seconds West for a distance of 276.51 feet to an iron pin; thence

452.55 feet along the arc of a 825.00 foot radius curve to the left, said arc having a 446.90 foot chord which bears South 22 degrees 39 minutes 39 seconds West to an iron pin; thence

South 06 degrees 56 minutes 46 seconds West for a distance of 113.98 feet to an iron pin; thence

230.09 feet along the arc of a 825.00 foot radius curve to the left, said arc having a 229.34 foot chord which bears South 01 degrees 02 minutes 37 seconds East to an iron pin; thence

South 80 degrees 57 minutes 59 seconds West for a distance of 818.24 feet to an iron pin; thence

550.31 feet along the arc of a 825.00 foot radius curve to the left, said arc having a 540.17 foot chord which bears South 61 degrees 51 minutes 25 seconds West to an iron pin; thence

South 42 degrees 44 minutes 51 seconds West for a distance of 1,017.18 feet to an iron pin; thence

86.96 feet along the arc of a 675.00 foot radius curve to the right, said arc having a 86.90 foot chord which bears North 03 degrees 41 minutes 26 seconds West to an iron pin lying on the Northerly boundary of the SE 1/4 of said Section 28, T9N-R2E, said point also lying on the Easterly boundary of the certain "32.21 acre tract of land" described in Deed Book 3706 at Page 976 of the Records of said Madison County, Mississippi; thence

North along the Westerly boundary of the SE 1/4 of said Section 28, T9N-R2E and the Easterly boundary of said "32.21 acre tract of land" for a distance of 338.60 feet to an iron pin at the NE corner of said "32.21 acre tract of land"; thence

Continue North along the Westerly boundary of the SE 1/4 and NE 1/4 of said Section 28, T9N-R2E, for a distance of 1,387.14 feet to the POINT OF BEGINNING of the above described parcel or tract of land.

LESS AND EXCEPT;

A parcel or tract of land, containing 81.82 acres, more or less, lying and being situated in the SE 1/4 of Section 28, T9N-R2E, Madison County, Mississippi, being a part of the Walker Lands II, LLC property as described in Deed Book 3385 at Page 454 of the Records of the Office of the Chancery Clerk of said Madison County, at Canton, Mississippi, and being more particularly described as follows:

COMMENCING at the SW corner of the SW 1/4 of Section 29, T9N-R2E, Madison County, Mississippi; run thence

East along the Southerly boundary of the SW 1/4 of said Section 29, T9N-R2E, for a distance of 2,667.77 feet to the SE corner, thereof, said point also lying at the SW corner of a parcel of land described as the "West 1/2 of the SE 1/4 less a strip of 4.0 chains evenly off East side of same"; thence

Continue East along the Southerly boundary of said parcel of land described as the "West 1/2 of the SE 1/4 less a strip of 4.0 chains evenly off East side of same" for a distance of 1,069.89 feet to the SE corner, thereof, said point also being and lying at the SW corner of Parcel 2 of the above referenced Walker Lands II, LLC property; thence

North along the Easterly boundary of said parcel of land described as the "West 1/2 of the SE 1/4 less a strip of 4.0 chains evenly off East side of same" and the Westerly boundary of Parcel 2 of said Walker Lands II, LLC property, for a distance of 494.94 feet; thence

Continue North along the Easterly boundary of said parcel of land described as the "West 1/2 of the SE 1/4 less a strip of 4.0 chains evenly off East side of same", the Easterly boundary of a parcel of land described as the "SW 1/4 of the NE 1/4 less a strip of 4.0 chains evenly off East side of same" and the Westerly boundary of Parcel 2 of said Walker Lands II, LLC property, for a distance of 2,702.87 feet to an iron pin; thence

North along the Westerly boundary of the NW 1/4 of said Section 28, T9N-R2E, for a distance of 2,081.47 feet to an iron pin lying at the NW corner, thereof; thence

East along the Northerly boundary of the NE 1/4 of said Section 28, T9N-R2E, for a distance of 2,481.56 feet to an iron pin; thence

South 01 degrees 22 minutes 39 seconds East for a distance of 1,260.46 feet to an iron pin; thence

572.40 feet along the arc of a 825.00 foot radius curve to the right, said arc having a 560.99 foot chord which bears South 18 degrees 29 minutes 56 seconds West to an iron pin; thence

South 38 degrees 22 minutes 31 seconds West for a distance of 276.51 feet to an iron pin; thence

452.55 feet along the arc of a 825.00 foot radius curve to the left, said arc having a 446.90 foot chord which bears South 22 degrees 39 minutes 39 seconds West to an iron pin; thence

South 06 degrees 56 minutes 46 seconds West for a distance of 113.98 feet to an iron pin; thence

230.09 feet along the arc of a 825.00 foot radius curve to the left, said arc having a 229.34 foot chord which bears South 01 degrees 02 minutes 37 seconds East to an iron pin; thence

Public Notices

Leaving the Easterly boundary of a said parcel of land described as the "SW 1/4 of the NE 1/4 less a strip of 4.0 chains evenly off East side of same" and the Westerly boundary of Parcel 2 of said Walker Lands II, LLC property, run East for a distance of 4255.16 feet to an iron pin lying on the Easterly boundary of the NW 1/4 of Section 28, T9N-R2E, said point also lying on the Westerly boundary of the NE 1/4 of said Section 28, T9N-R2E; thence

North along the Westerly boundary of the NW 1/4 of said Section 28, T9N-R2E, for a distance of 2,081.47 feet to an iron pin lying at the NW corner, thereof; thence

East along the Northerly boundary of the NE 1/4 of said Section 28, T9N-R2E, for a distance of 2,481.56 feet to an iron pin; thence

Leaving the Northerly boundary of the NE 1/4 of said Section 28, T9N-R2E, run to points at each of the following calls;

South 01 degrees 22 minutes 39 seconds East for a distance of 1,260.46 feet to an iron pin; thence

572.40 feet along the arc of a 825.00 foot radius curve to the right, said arc having a 560.99 foot chord which bears South 18 degrees 29 minutes 56 seconds West to an iron pin; thence

South 38 degrees 22 minutes 31 seconds West for a distance of 276.51 feet to an iron pin; thence

452.55 feet along the arc of a 825.00 foot radius curve to the left, said arc having a 446.90 foot chord which bears South 22 degrees 39 minutes 39 seconds West to an iron pin; thence

South 06 degrees 56 minutes 46 seconds West for a distance of 113.98 feet to an iron pin; thence

230.09 feet along the arc of a 825.00 foot radius curve to the left, said arc having a 229.34 foot chord which bears South 01 degrees 02 minutes 37 seconds East to an iron pin and POINT OF BEGINNING of the herein described property; thence

South 80 degrees 57 minutes 59 seconds West for a distance of 818.24 feet to an iron pin; thence

550.31 feet along the arc of a 825.00 foot radius curve to the left, said arc having a 540.17 foot chord which bears South 61 degrees 51 minutes 25 seconds West to an iron pin; thence

South 42 degrees 44 minutes 51 seconds West for a distance of 1,017.18 feet to an iron pin; thence

625.37 feet along the arc of a 675.00 foot radius curve to the left, said arc having a 603.24 foot chord which bears South 18 degrees 55 minutes 22 seconds East to an iron pin; thence

South 60 degrees 27 minutes 51 seconds East for a distance of 395.30 feet to an iron pin; thence

261.49 feet along the arc of a 787.00 foot radius curve to the right, said arc having a 260.29 foot chord which bears South 50 degrees 56 minutes 44 seconds East to an iron pin; thence

South 41 degrees 25 minutes 38 seconds East for a distance of 285.62 feet to an iron pin; thence

North 48 degrees 34 minutes 22 seconds East for a distance of 25.00 feet to an iron pin; thence

North 41 degrees 25 minutes 38 seconds West for a distance of 300.00 feet to an iron pin; thence

North 88 degrees 34 minutes 22 seconds East for a distance of 261.96 feet to an iron pin lying on the Northerly Right-Of-Way of Mississippi Highway No. 22, as it existed in September, 2020, said right-of-way being more fully and particularly described in that certain conveyance from Mississippi Major Economic Authority to the Mississippi Department of Transportation recorded on June 17, 2010 in Deed Book 2548 at Page 667 of the Records of said Madison County at Canton, Mississippi; thence

Along the Northerly Right-Of-Way of said Mississippi Highway No. 22 to points at each of the following calls;

174.28 feet along the arc of a 1819.86 foot radius curve to the left, said arc having a 174.22 foot chord which bears North 32 degrees 58 minutes 11 seconds East feet to an iron pin; thence

North 29 degrees 26 minutes 32 seconds East for a distance of 1,096.07 feet to an iron pin; thence

North 32 degrees 22 minutes 47 seconds East for a distance of 399.19 feet to an iron pin; thence

228.35 feet along the arc of a 2954.79 foot radius curve to the right, said arc having a 228.30 foot chord which bears North 32 degrees 26 minutes 26 seconds East to an iron pin; thence

Leaving the Northerly Right-Of-Way of said Mississippi Highway No. 22, run to points at each of the following calls;

North 56 degrees 05 minutes 48 seconds West for a distance of 180.17 feet to an iron pin; thence

530.88 feet along the arc of a 825.00 foot radius curve to the right, said arc having a 521.77 foot chord which bears North 37 degrees 39 minutes 43 seconds West to an iron pin; thence

North 19 degrees 13 minutes 38 seconds West for a distance of 126.58 feet to an iron pin; thence

146.78 feet along the arc of a 825.00 foot radius curve to the right, said arc having a 146.59 foot chord which bears North 14 degrees 07 minutes 50 seconds West to the POINT OF BEGINNING of the above described parcel or tract of land.

LESS AND EXCEPT

A parcel or tract of land, containing 54.88 acres, more or less, lying and being situated in the SW 1/4 and the SE 1/4 of Section 28, T9N-R2E, and the NE 1/4 and the NW 1/4 of Section 33, T9N-R2E, Madison County, Mississippi, being a part of the Walker Lands II, LLC property as described in Deed Book 3385 at Page 454 of the Records of the Office of the Chancery Clerk of said Madison County, at Canton, Mississippi, and being more particularly described as follows:

COMMENCING at the SW corner of the SW 1/4 of Section 29, T9N-R2E, Madison County, Mississippi; run thence

East along the Southerly boundary of the SW 1/4 of said Section 29, T9N-R2E, for a distance of 2,667.77 feet to the SE corner, thereof, said point also lying at the SW corner of a parcel of land described as the "West 1/2 of the SE 1/4 less a strip of 4.0 chains evenly off East side of same"; thence

Continue East along the Southerly boundary of said parcel of land described as the "West 1/2 of the SE 1/4 less a strip of 4.0 chains evenly off East side of same" for a distance of 1,069.89 feet to the SE corner, thereof, said point also lying at the SW corner of a parcel of land described as the "West 1/2 of the SE 1/4 less a strip of 4.0 chains evenly off East side of same"; thence

Continue East along the Southerly boundary of said parcel of land described as the "West 1/2 of the SE 1/4 less a strip of 4.0 chains evenly off East side of same" for a distance of 1,069.89 feet

Public Notices

East along the Southerly boundary of the SW 1/4 of said Section 29, T9N-R2E, for a distance of 2,667.77 feet to the SE corner, thereof, said point also lying at the SW corner of a parcel of land described as the "West 1/2 of the SE 1/4 less a strip of 4.0 chains evenly off East side of same"; thence

Continue East along the Southerly boundary of said parcel of land described as the "West 1/2 of the SE 1/4 less a strip of 4.0 chains evenly off East side of same" for a distance of 1,069.89 feet to the SE corner, thereof; thence

North along the Easterly boundary of said parcel of land described as the "West 1/2 of the SE 1/4 less a strip of 4.0 chains evenly off East side of same" for a distance of 494.94 feet to an iron pin; thence

Leaving the Easterly boundary of said parcel of land described as the "West 1/2 of the SE 1/4 less a strip of 4.0 chains evenly off East side of same", run to iron pins at each of the following calls;

East for a distance of 2,948.56 feet; thence

Continue East for a distance of 76.48 feet to the POINT OF BEGINNING of the herein described property; thence

South for a distance of 92.14 feet; thence

North 86 degrees 26 minutes 00 seconds West for a distance of 56.72 feet; thence

South 07 degrees 45 minutes 00 seconds East for a distance of 551.00 feet; thence

South 41 degrees 20 minutes 00 seconds East for a distance of 332.00 feet; thence

South 48 degrees 14 minutes 00 seconds East for a distance of 138.00 feet; thence

South 51 degrees 14 minutes 00 seconds East for a distance of 141.00 feet; thence

South 58 degrees 34 minutes 00 seconds East for a distance of 82.00 feet; thence

South 66 degrees 40 minutes 00 seconds East for a distance of 91.00 feet; thence

South 76 degrees 31 minutes 27 seconds East for a distance of 174.46 feet; thence

South 80 degrees 03 minutes 19 seconds East for a distance of 138.82 feet; thence

South 40 degrees 59 minutes 25 seconds East for a distance of 139.02 feet to the Northerly Right-Of-Way of Mississippi Highway No. 22, as it existed in December, 2018, said right-of-way being more fully and particularly described in that certain conveyance from Mississippi Major Economic Authority to the Mississippi Department of Transportation recorded on June 17, 2010 in Deed Book 2548 at Page 667 of the Records of said Madison County at Canton, Mississippi; thence

Along the Northerly Right-Of-Way of said Mississippi Highway No. 22 to iron pins at each of the following calls;

North 44 degrees 39 minutes 42 seconds East for a distance of 266.64 feet; thence

North 47 degrees 14 minutes 36 seconds East for a distance of 446.44 feet to the POINT OF BEGINNING of the herein described property; thence

Leaving the Northerly Right-Of-Way of said Mississippi Highway No. 22, run to iron pins at each of the following calls;

North 01 degrees 04 minutes 22 seconds East for a distance of 295.86 feet; thence

North 41 degrees 25 minutes 38 seconds West for a distance of 300.00 feet; thence

North 48 degrees 34 minutes 22 seconds East for a distance of 25.00 feet; thence

North 41 degrees 25 minutes 38 seconds West for a distance of 285.62 feet; thence

211.65 feet along the arc of a 637.00 foot radius curve to the left, said arc having a 210.68 foot chord which bears North 50 degrees 56 minutes 44 seconds East; thence

North 60 degrees 27 minutes 51 seconds West for a distance of 395.30 feet; thence

365.26 feet along the arc of a 825.00 foot radius curve to the right, said arc having a 362.29 foot chord which bears North 47 degrees 46 minutes 50 seconds West for a distance of 300.00 feet; thence

North 01 degrees 04 minutes 22 seconds East for a distance of 295.86 feet; thence

North 41 degrees 25 minutes 38 seconds West for a distance of 300.00 feet; thence

North 48 degrees 34 minutes 22 seconds East for a distance of 25.00 feet; thence

North 41 degrees 25 minutes 38 seconds West for a distance of 285.62 feet; thence

211.65 feet along the arc of a 637.00 foot radius curve to the left, said arc having a 210.68 foot chord which bears North 50 degrees 56 minutes 44 seconds East; thence

North 60 degrees 27 minutes 51 seconds West for a distance of 395.30 feet; thence

365.26 feet along the arc of a 825.00 foot radius curve to the right, said arc having a 362.29 foot chord which bears North 47 degrees 46 minutes 50 seconds West for a distance of 300.00 feet; thence

Leaving the Northerly Right-Of-Way of said Mississippi Highway No. 22, run to iron pins at each of the following calls;

North 01 degrees 04 minutes 22 seconds East for a distance of 295.86 feet; thence

North 41 degrees 25 minutes 38 seconds West for a distance of 300.00 feet; thence

North 48 degrees 34 minutes 22 seconds East for a distance of 25.00 feet; thence

North 41 degrees 25 minutes 38 seconds West for a distance of 285.62 feet; thence

211.65 feet along the arc of a 637.00 foot radius curve to the left, said arc having a 210.68 foot chord which bears North 50 degrees 56 minutes 44 seconds East; thence




Providing Insurance and Financial Services

601-790-2600
www.jdorsa.com

John Dorsa, CPCU



SPENCER CONCRETE READY-MIX



Danny S. Prestel, DVM
601-859-2703

Canton Animal Hospital

3114 South Liberty (Old Hwy 51 S), Canton



102 JACKSON, STREET
FLORA • MISSISSIPPI 39071

FLORA
Making Much of Jesus

WWW.FBCFLORA.ORG
601.879.8022



230 Hwy 51 North
Ridgeland, MS 39157
601-206-8880
gotgear.com

POLARIS TRIUMPH KTM HONDA
Kawasaki Indian YAMAHA VICTORY



SPECIAL MILLWORK

CAPITOL
HARDWARE / BUILDING PRODUCTS

LARRY STACY / SALES REPRESENTATIVE
112 BUSINESS PARK DR. • RIDGELAND, MS 39157
OFFICE: 601.977.9990 • FAX: 601.977.8838

“Therefore, if anyone is in Christ, he is a new creation. The old has passed away; behold, the new has come.”
— 2 Corinthians 5:17 (ESV)



FIRST UNITED METHODIST CHURCH
Corner of Liberty St. & Academy St. - Canton

9:30 Sunday School Wed. Night Supper 5:30
10:30 Worship Service Worship 6:15

601-859-4621
www.fumccanton.com

“Do not boast about tomorrow, for you do not know what a day may bring.”
— Proverbs 27:1 (ESV)



Thomas “Tico” Hoffman
1536 East County Line Road • 601-956-1030



Natchez Trace Funeral Home
MEMORIAL PARK CEMETERY & CREMATORY

Funeral Home, Cemetery, Crematory, Mausoleum, Pet Columbarium, Memorials & Cremation Benches

ALL IN ONE LOCATION

Stop by anytime for a tour!
Pre-Need Financing Available!
Locally Owned & Operated!

601-898-8565

“For God so loved the world that he gave his one and only Son, that whoever believes in him shall not perish but have eternal life.”
— John 3:16 (NIV)



P.O. Box 1310
11748 Hwy 35
Kosciusko, MS 39090
662.289.4111

P.O. Box 71
3434 N. Liberty St.
Canton, MS 39046
601.859.2031

Culpepper FUNERAL HOME
culpepperfuneralhome.com

Getting the Message/Rev. Chris Shelton

More than conquerors in Christ

Sometimes when you look at a product on the internet, you will see an image of a magnifying glass. If you click on it, you will see an enlargement of the specifications of the product. The vision in Daniel chapter eight does that for us with respect to the evil of the anti-Christ.

In Daniel chapter seven, we were told of a little horn that would devour the whole earth and persecute the saints of the Most High at the end of history. But the final anti-Christ will not be without predecessors, and in chapter eight we see a type of the anti-Christ.

We are told that a little horn (verse 8) comes out of the empire of Greece, which conquered the empire of Medo-Persia (around 330 BC) (verses 5-8, 20-21). Daniel is in Babylon at the time of this vision (550 BC), and the temple in Jerusalem has been destroyed. The vision looks ahead to a rebuilt temple in Jerusalem. The little horn does terrible things there (verses 11-13, 23-25).

The little horn in this prophecy is easily identified. It is Antiochus Epiphanes. He came into power out of the Seleucid Empires around 175 b.c. When he came to Jerusalem, he replaced the high priest. To stamp out resistance, he killed 40,000 in three days. He defiled the temple by sacrificing a pig in the holy of holies.

He put an end to the daily sacrifices, prohibited the Hebrew Scriptures at penalty of death, placed an altar to Zeus in the temple, and offered human sacrifices. These atrocities and more provoked the indignation of the Lord (verse 19).

The first thing we can learn is that the Lord prepares His people for tribulation in this world and tells His people they also will have tribulation (John 15, 16). As Ralph Davis writes, “Jesus hides nothing in fine print. He forewarns his people to be prepared for tribulation.” Antiochus tried to eradicate the worship practices God had put in place.

Antiochus put an end to daily sacrifices. These sacrifices taught God’s people the necessity of a sacrifice for sin in order for them to enjoy fellowship with God. They no longer exist for Christians because Christ offered a sacrifice once for sin. Christians live daily in remembrance of that sacrifice. The devil would seek to take away or blunt

the truth of it.

When Jesus said “I go to prepare a place for you.” He was referring to His sacrifice on the cross. Without His atoning blood, we can have no place with God. The value of such salvation is worth more than life in this world. The anti-Christ in Daniel nine is broken by God (Daniel 8:25), like all the enemies of God will be. But all who trust in Christ will inherit the kingdom of God.

Antiochus cast “truth to the ground” (Daniel 8:12). Antiochus defiled the temple. He corrupted the worship of the Lord. The temple of the Lord now is made up of the saints, “the living stones” (1st Peter 2). Christians are to worship in spirit and truth. We must maintain the truth of Christ to maintain the true worship of God.

Another thing we learn is that the Lord gives His people a sure word. This is a remarkable prophecy in its specifics. Daniel writes about things that will happen long after he is dead. All these events occurred just as written. All the things the prophets wrote of Christ were also fulfilled.

The prophets searched intently into the details of Christ’s sufferings and subsequent glories (1st Peter 1). They wanted a magnifying glass on these truths. We have it. Christ came, died, rose from the dead, and ascended into heaven, according to the Scriptures. Let these truths support your faith.

Zechariah in Luke one, by the Spirit, spoke of the “horn of salvation” God raised up for us in the house of David. He will destroy the little horn and all the enemies of God. This horn is Christ our Lord. In Isaiah 40, the Lord says, “Comfort ye, comfort ye my people.” The comfort is the coming of a Savior who will take away sin and carry his people like lambs in his arms (Isaiah 40:2, 11).

At the end of Isaiah 40, we see help in tribulation. It is Christ who gives power to the faint, and to them who have no might, he increases strength. The worn out saints are made to mount up on eagle’s wings, to overcome by faith such things that would be impossibilities without Christ (Isaiah 40:29-31). It is for that purpose Christ’s Spirit dwells in us. And in him we are more than conquerors.

Area Churches

- BAPTIST**
BROADMOOR BAPTIST
1531 Highland Colony Pkwy., Madison
601-898-2345
BUCK HORN BAPTIST
2193 N. Old Canton Rd.
Canton 859-7039
CALVARY BAPTIST
441 Washington St., Canton 859-7431
CANTON BIBLE BAPTIST
815 Dr Martin Luther King Dr. N.
Canton 859-2003
CENTER TERRACE BAPTIST
605 E. Peace St., Canton, 859-4186
CHURCH OF THE HIGHLANDS
670 Highland Colony Parkway, Ridgeland
COLONIAL HEIGHTS BAPTIST Northpark
Dr., Ridgeland
COUNTY LINE MISSIONARY
BAPTIST
109 Lula Baptist Church Rd.
Flora 879-8404
DAMASCUS BAPTIST
3964 Hwy. 22, Flora 662-746-5938.
FAIRVIEW MISSIONARY BAPTIST
1278 N. Old Canton Rd.
Madison 605-2090
FARMHAVEN BAPTIST
420 Pat Luckett, Canton 859-7238
FEARNS CHAPEL
FREEWILL BAPTIST
Old Pochontas Rd., Flora 879-3525
FIRST BAPTIST
3316 S. Liberty St., Canton 859-3172
FIRST BAPTIST OF FLORA
102 Jackson St., Flora 879-8022
FIRST BAPTIST OF MADISON
2100 Main St., Madison 856-6177
FIRST BAPTIST OF RIDGELAND
302 W. Jackson St., 856-8724
FIRST STOKES CHAPEL BAPTIST
459 Third Ave., Canton 859-7911
FRANKLIN BAPTIST
Hwy. 22 W., Flora 879-3415
GOOD HOPE MISSIONARY BAPTIST
1828 Cox Ferry Rd., Flora 879-3913
GRACE CROSSING BAPTIST
CHURCH
598 Yandell Road, 601-427-0163
GREATER RICHMOND
GROVE BAPTIST
Complex Rd., 856-2209
GREATER ROSS CHAPEL
MISSIONARY BAPTIST
Gluckstadt Rd., Madison 856-8778
GREATER ST. MATTHEW
MISSIONARY BAPTIST
3796 N. Liberty St., Canton 855-0240
HARVEY CHAPEL MISSIONARY BAP-
TIST
242 Ragsdale Rd., Canton 859-8811
HIGHLAND COLONY BAPTIST
Jay Richardson, Pastor
1200 Highland Colony Pkwy. 856-4031
HUMBLE JERUSALEM BAPTIST
420 Hwy. 16 W., Canton 859-0654
JONES CHAPEL BAPTIST
Pocahontas Rd., Flora 879-3447

- LIBERTY BAPTIST
815 W. Fulton St., Canton 859-6407
LIVINGSTON MISSIONARY
BAPTIST
Livingston Church Rd., Flora 879-3400
MADISON COUNTY BAPTIST
FAMILY LIFE CENTER
349 N. Canal St., Canton 859-9132
MAGNOLIA HEIGHTS BAPTIST
206 Pine St., Flora 879-8122
MARY GROVE BAPTIST
Rankin Rd., Canton 859-5771
MARY MAGDALENE BAPTIST
1457 Loring Rd., Canton 859-2448
MOUNT ABLE BAPTIST
Hwy. 43 S., Canton 859-3511
MOUNT LEVI BAPTIST
1008 W. Fulton St., Canton 859-8720
MOUNT PLEASANT BAPTIST
Gluckstadt Rd., Madison 856-5862
MOUNT ZION BAPTIST
514 W. North St., Canton 859-2453
MOUNT ZION COBBVILLE BAPTIST
4206 Hwy. 51, Canton 859-5692
MT. CENTER MISSIONARY BAPTIST
468 Robinson Springs Rd.
Flora 879-3117
MT. ELAM MISSIONARY BAPTIST
306 Mt. Elam Rd., Flora 879-9094
MT. HOPE MISSIONARY BAPTIST
201 Patrick Rd., Canton 855-0052
MT. LEVI BAPTIST
Hwy. 22, Canton 859-8720
MT. OLIVE MISSIONARY BAPTIST
1397 Way Rd., Canton 859-1133
MT. OLIVE MISSIONARY BAPTIST
111 Mt. Olive Church Rd.,
Madison 853-3100
MT. PISGAH MISSIONARY BAPTIST
793 Pisgah Bottom Rd.
Canton 859-4329
NEW BETHEL BAPTIST
101 James Ave., Canton 859-2829
NEW BIRTH FELLOWSHIP
MISSIONARY BAPTIST
837 Old Agency Rd., Madison 856-5279
NEW LIFE BAPTIST
385 N. Old Canton Rd.
Madison 856-8722
NEW TRUELIGHT BAPTIST
363 John Day Rd., Canton 859-5237
OLD RICE ROAD BAPTIST
82 Old Rice Rd., Madison 853-7500
OLD TRUELIGHT MISSIONARY
BAPTIST
128 Summerlin Rd., Canton 859-3555
PILGRIM REST BAPTIST
239 Crawford St., Madison 856-2609
PILGRIM REST MISSIONARY
BAPTIST
701 Hwy. 43, Canton 859-6716
PILGRIM REST MISSIONARY
BAPTIST
852 Madison Ave. #A, Madison 856-2609
PILGRIM REST MISSIONARY
BAPTIST
409 Main, Madison 856-2609
PINE GROVE MISSIONARY

- BAPTIST
249 Pine Grove Rd., Canton 855-2060
PLEASANT GIFT MISSIONARY
BAPTIST
2055 Pleasant Gift Rd., Canton 859-3004
PLEASANT GREEN BAPTIST
3920 Hwy. 43 N., Canton 859-5186
PLEASANT GROVE
MISSIONARY BAPTIST
2184 Hwy. 22, Canton 859-5101
PRIESTLEY CHAPEL
MISSIONARY BAPTIST
Virilia Rd., Canton 859-8449
RIDGECREST BAPTIST
7469 Old Canton Rd., Madison 853-1090
RIDLEY HILL
MISSIONARY BAPTIST
1034 N. Livingston Rd.,
Madison 853-1068
RISING CHAPEL BAPTIST
127 Rising Chapel Rd., Canton 859-4393
ROCKY HILL BAPTIST
390 County Barn Rd., Madison 856-0759
SHADY GROVE BAPTIST
168 Shady Grove Rd., Flora 879-3380
SHARON COMMUNITY BAPTIST
114 Church St., Canton 859-5656
SIMMONS MEMORIAL BAPTIST
118 Memorial Rd., Flora 879-8105
SIMON HILL BAPTIST
139 W. Ridgeland Ave., 853-2669
SMITH CHAPEL BAPTIST
323 Livingston Vernon Rd.
Flora 879-9110
SMITH CHAPEL BAPTIST
Hwy. 49 S., Flora 879-8185
SOUTH LIBERTY BAPTIST
531 S. Liberty St., Canton 859-1279
SOUTHERN HILLS
MISSIONARY BAPTIST
1419 Hwy. 16 W., Canton 859-3523
ST. JAMES MISSIONARY BAPTIST
814 Old Yazoo City Rd.
Canton 859-3001
ST. PETER MISSIONARY BAPTIST
2300 Stump Bridge Road
Camden, MS
STOKES CHAPEL BAPTIST
902 Stokes Rd., Flora 879-3826
TRACE RIDGE BAPTIST
238 Lake Harbour Dr. 898-2003
TWIN LAKES BAPTIST
673 Lake Cavalier Rd.
Madison 856-2305
UNION HILL MISSIONARY BAPTIST
4549 Hwy. 22, Flora 879-9060
VICTORY BAPTIST
420 Hoy Rd., Madison 856-4260
WILSON GROVE BAPTIST
Cox Ferry Rd. NE, Flora 879-8602
WOODMAN HILL MISSIONARY
BAPTIST
468 Kearney Park Rd., Flora 879-83470




Providing Insurance and Financial Services

601-790-2600
www.jdorsa.com

John Dorsa, CPCU




STEEP SLOPE MOWING



Mowers that can mow up to ninety degree slopes, dams, highway overpasses and ponds.

Servant Specialty Mowing, LLC.
Call Ryan 601-270-1982



License #46299

DAN D'AMICO License #46776 | **VICKIE GRAVES** Licenses #46774
P: 601.607.4730 | F: 601.607.4727 | amsmort.com

Mississippi Licenses Mortgage Company
7738A Old Canton Road, Madison, MS 3991



The Best in Custom Hardwood Shutters.

www.paulellisshutters.com 601-238-5760



Preserve the Trees
Thru Greater Depths
601.853.8700
SuperTalk 97.3FM
Saturday • 10:00AM
Atlas Foundation Repair

BOARDING AVAILABLE!



262 New Mannsdale Road • Madison, MS 39110
601-856-5333 • Fax: 601-856-1979
www.allcreaturesacc.vetsuite.com

“Commit your work to the Lord, and your plans will be established.”
— Proverbs 16:3 (ESV)



114 CENTRE ST. • RIDGELAND, MS 39157
601-991-9663
www.HondaCarShop.net • Maintenance & Repair • We do it all!



5 LOCATIONS TO SERVE & 24 HOUR TOWING SERVICE
Ridgeland • 601-856-0700 Richland • 601-664-9770
Lakeland • 601-939-9700 South • 601-372-0042
Gluckstadt • 601-499-1700

Mississippi's leading resource for office products and business communications solutions.



Copier and Printing
Mailing and Shipping

5442 Executive Plaza
Jackson, MS 39206
601.362.9192
WWW.ABSMS.COM

“Let all that you do be done in love.”
— 1 Corinthians 16:14 (ESV)



CAREGIVERS/NURSES
ALL AGES • 2-24 HOURS A DAY
PCNURSING.COM 601.977.8484

“Finally, all of you, have unity of mind, sympathy, brotherly love, a tender heart, and a humble mind.”
— 1 Peter 3:8 (ESV)

MADISON COUNTY JOURNAL

Your Hometown Newspaper

Subscribe online today at mymcj.com

NOTICE OF A PUBLIC HEARING ON THE PROPOSED BUDGET AND PROPOSED TAX LEVIES FOR THE UPCOMING FISCAL YEAR FOR THE CITY OF GLUCKSTADT, MISSISSIPPI

The City of Gluckstadt will hold a public hearing on its proposed budget and proposed tax levies for fiscal year 2023-2024 at 6 p.m. on September 5, 2023, at Gluckstadt City Hall, 343 Distribution Drive, Madison, MS 39110.

The City of Gluckstadt is now operating with projected total budget revenue of \$7,059,386. 19.0 percent or \$1,338,600 of such revenue is obtained through ad valorem taxes. For the next fiscal year, the proposed budget has total projected revenue of \$6,527,141. Of that amount, 22.2 percent or \$1,448,900 is proposed to be financed through a total ad valorem tax levy.

The decision to not increase the ad valorem tax millage rate for fiscal year 2023-2024 above the current fiscal year's ad valorem tax millage rate means you will not pay more in ad valorem taxes on your home, automobile tag, utilities, business fixtures and equipment and rental real property, unless the assessed value of your property has increased for fiscal year 2023-2024.

Any citizen of the City of Gluckstadt is invited to attend this public hearing on the proposed budget and tax levies for fiscal year 23-24 and will be allowed to speak for a reasonable amount of time and offer tangible evidence before any vote is taken.

The proposed 2023-24 budget is available for inspection at Gluckstadt City Hall, 343 Distribution Drive, Madison, MS 39110.

NOTICE OF A PUBLIC HEARING ON THE PROPOSED BUDGET AND PROPOSED TAX LEVIES FOR THE UPCOMING FISCAL YEAR FOR CITY OF MADISON, MISSISSIPPI

The City of Madison, Mississippi Mayor and Board of Aldermen will hold a public hearing on its proposed budget and proposed tax levies for fiscal year 2024 on Tuesday, September 5, 2023 at 6:00 p.m. at Madison Justice Complex, located on Crawford Street, Madison, Mississippi 39110.

The City of Madison, Mississippi is now operating with projected total budget revenue of \$53,716,422. (26 percent) or \$13,726,500 of such revenue is obtained through ad valorem taxes. For the next fiscal year, the proposed budget has total projected revenue of \$54,508,835. Of that amount, (26 percent) or \$14,090,500 is proposed to be financed through a total ad valorem tax levy.

The decision to not increase the ad valorem tax millage rate for fiscal year 2024 above the current fiscal year's ad valorem tax millage rate means you will not pay more in ad valorem taxes on your home, automobile tag, utilities, business fixtures and equipment and rental real property, unless the assessed value of your property has increased for fiscal year 2024.

Any citizen of the City of Madison, Mississippi is invited to attend this public hearing on the proposed budget and tax levies for fiscal year 2024 and will be allowed to speak for a reasonable amount of time and offer tangible evidence before any vote is taken.

s/Susan B. Crandall
Susan B. Crandall, City Clerk
Director of Administration & Finance

★ ADVERTISING IN LOCAL NEWSPAPERS WORKS!

OVER 2 MILLION READERS IN MISSISSIPPI EACH MONTH

Consumers read ads in Mississippi newspapers in print and online to help them decide which brands to purchase

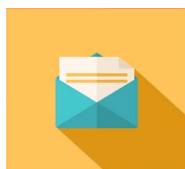


63% of Mississippi Adults read newspaper ads in print and online

Versus other media platforms



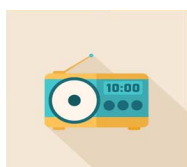
59% TV and TV websites



43% Direct mail



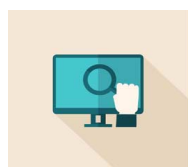
34% Social media



30% Radio and radio websites



25% Magazines



18% Other websites

Almost **9 out of 10** Mississippians believe that newspaper advertising is important!



SOURCE: CODA VENTURES MISSISSIPPI READER ENGAGEMENT SURVEY
SCAN HERE WITH YOUR SMARTPHONE TO READ THE FULL REPORT

Capri Theater Jackson, MS

Saturday, August 26th • 4:30 pm

Purchase tickets: caprimovies.com

A Conversation with Filmmaker Don Warren & Dogleg Writer/Director Al Warren to follow

BRAIN DEAD STUDIOS PRESENTS A STUDIO YOURS TRULY PRODUCTION OF A JAW WORK FILM

EVERY DOG HAS ITS DAY
EVERY DAY HAS ITS WAY OF BEING FORGOTTEN

Dogleg

STARRING AL WARREN • ELLA SMITH • KRISTOFFER BORGHI • COURTNEY PAUROSO • ANGELA TRIMBUR • DYLAN REDFORD
DAVID AARON BAKER • BRIDEY ELLIOTT • NICK PINKERTON • VATANA SHAW • DABBS ANDERSON • SALLY MULLINS • CHAD DAMIANI
DEMORGE BROWN • ZURAH LYNN TAYLOR • JAMIE GRANATO • ROBBY PIANTANDA • WRITTEN, DIRECTED, PRODUCED BY AL WARREN
PRODUCED BY BABAK KHOSHROU • EXECUTIVE PRODUCERS STEVE SMITH • MEG MURRANE • KYLE NG • CO-EXECUTIVE PRODUCER
WILLIAM ABRAMSON • WRITTEN BY MICHAEL BIBLE • CINEMATOGRAPHY BY ROBBY PIANTANDA • LINE PRODUCER HERON BOURKE
ASSOCIATE PRODUCERS ALEXANDRA THURMOND • FRED HELM